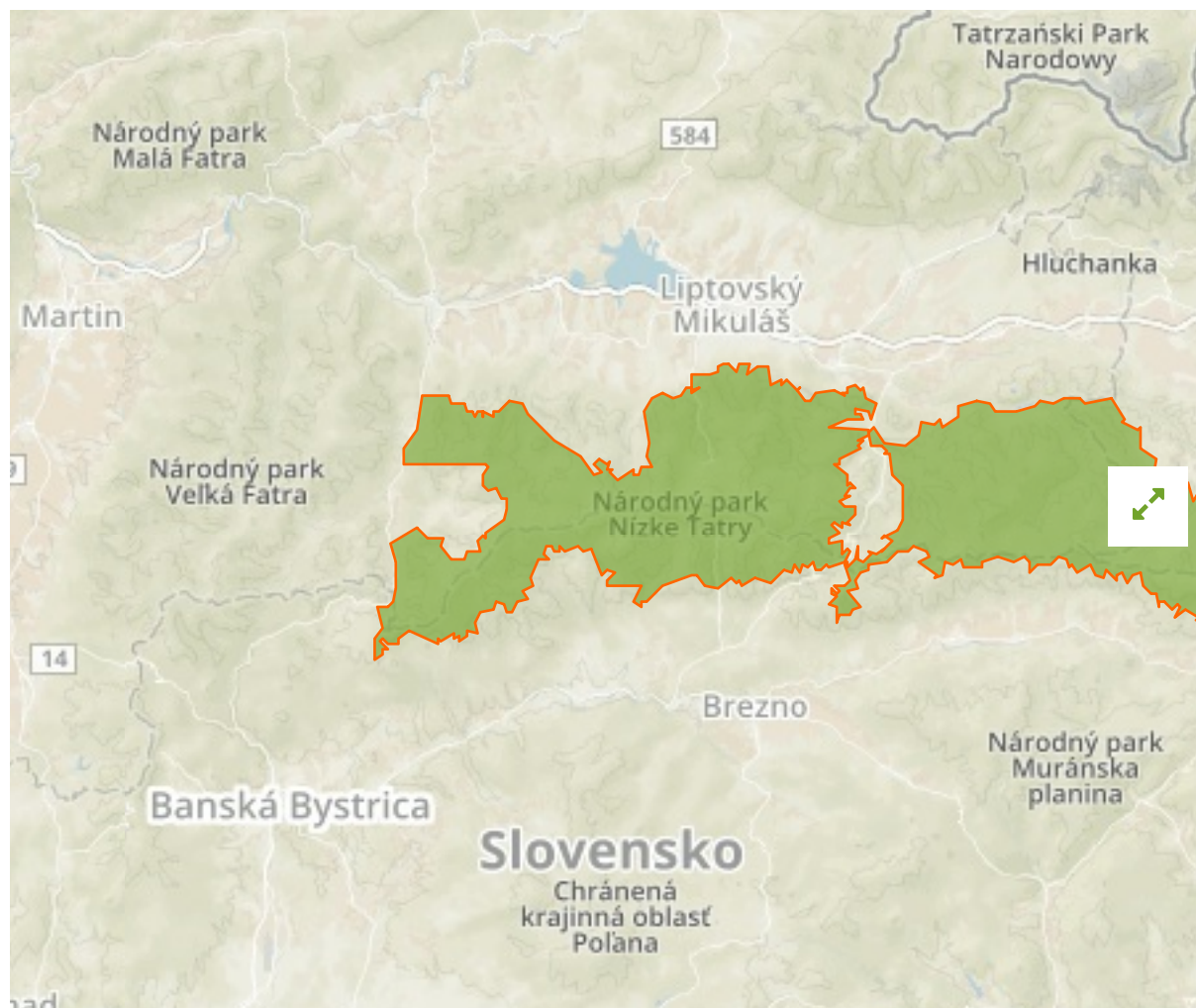


Nízke Tatry in Slovakia



The designations employed and the presentation of material on this map do not imply the expression of any opinion whatsoever on the part of the Secretariat of the United Nations concerning the legal status of any country, territory, city or area or of its authorities, or concerning the delimitation of its frontiers or boundaries.

WDPA ID

12152

Reported Area

728.42 km²

Management Effectiveness Evaluations

CCPAMET 2017

Attributes

| | |
|---------------------------------|--|
| Original Name | Nízke Tatry |
| English Designation | National Park; third level of protection |
| IUCN Management Category | V |
| Status | Designated |
| Type of Designation | National |
| Status Year | 1997 |
| Sublocation | |
| Governance Type | Federal or national ministry or agency |
| Management Authority | State Nature Conservancy of the Slovak Republic, Tajovskeho 28B, 974 01 Banska Bystrica |
| Management Plan | Not Reported |
| International Criteria | Not Applicable |