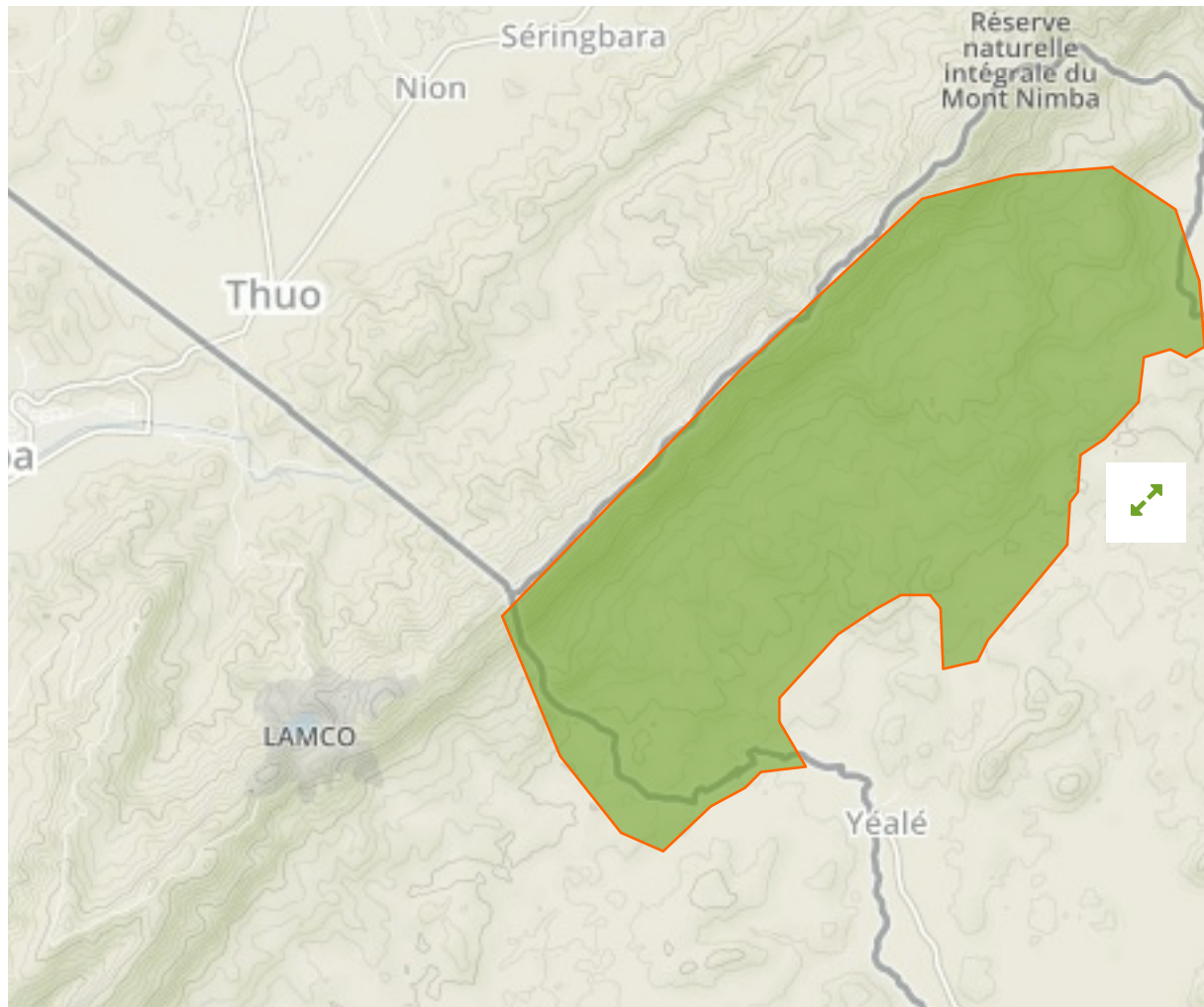


## Mount Nimba Integral Reserve in Côte D'Ivoire



The designations employed and the presentation of material on this map do not imply the expression of any opinion whatsoever on the part of the Secretariat of the United Nations concerning the legal status of any country, territory, city or area or of its authorities, or concerning the delimitation of its frontiers or boundaries.

WDPA ID

---

**1295**

Reported Area

---

**50.0 km<sup>2</sup>**

Vulnerability Assessment

---



Present [↗](#)

**i Data Provider**

Office Ivoirien des Parcs et Reserves

## Management Effectiveness Evaluations

---

METT

2017

### Attributes

---

<b>Original Name</b>	<b>Mount Nimba Integral Reserve</b>
<b>English Designation</b>	<b>Integral National Reserve</b>
<b>IUCN Management Category</b>	<b>Ia</b>
Status	Designated
Type of Designation	National
Status Year	1944
Sublocation	CI-06
Governance Type	Government-delegated management
Management Authority	Office Ivoirien des Parcs et Reserves
Management Plan	Not Ready
International Criteria	Not Applicable

### Site network breakdown

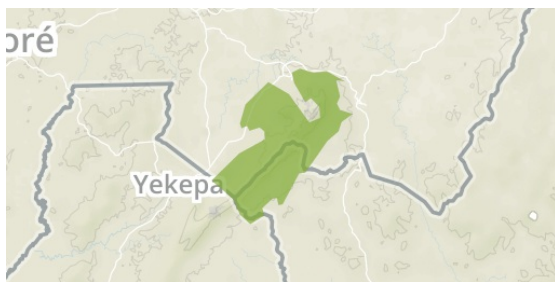
---

#### Transboundary sites

---

## Mount Nimba Strict Nature Reserve

in Guinea, Côte D'Ivoire



English Designation

World Heritage Site (natural or mixed)

IUCN Category

Not Applicable

WDPA ID      Year of Designation

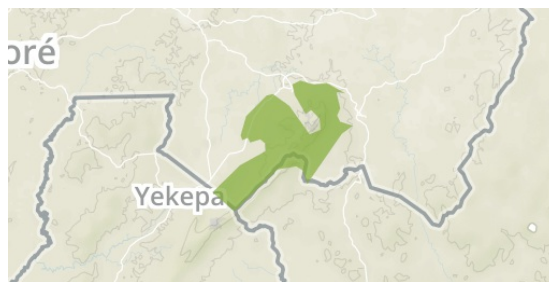
2574

Reported Area

221.3 km<sup>2</sup>

## Mount Nimba

in Guinea



English Designation

Strict Nature Reserve

IUCN Category

Ia

WDPA ID      Year of Designation

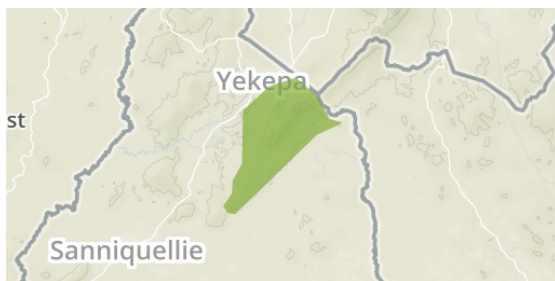
29067

Reported Area

130.0 km<sup>2</sup>

## East Nimba Nature Reserve

in Liberia



English Designation

Nature Reserve

IUCN Category

Not Reported

WDPA ID      Year of Designation

9176

Reported Area

135.0 km<sup>2</sup>