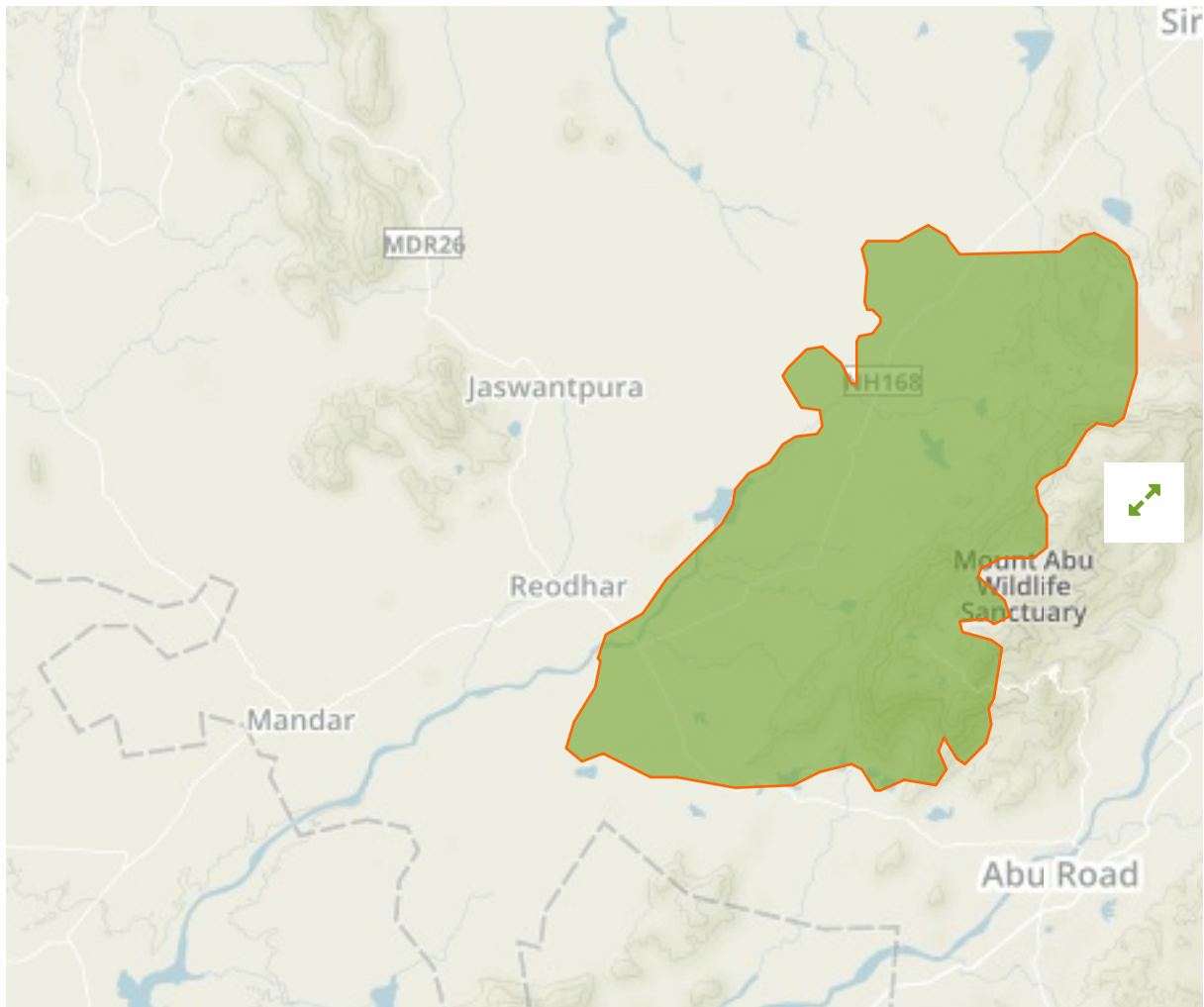


## Mount Abu in India



The designations employed and the presentation of material on this map do not imply the expression of any opinion whatsoever on the part of the Secretariat of the United Nations concerning the legal status of any country, territory, city or area or of its authorities, or concerning the delimitation of its frontiers or boundaries.

WDPA ID

---

**1846**

Reported Area

---

**326.1 km<sup>2</sup>**

## Management Effectiveness Evaluations

---

MEE of National Parks and Wildlife Sanctuaries 2013

### Attributes

---

<b>Original Name</b>	<b>Mount Abu</b>
<b>English Designation</b>	<b>Sanctuary</b>
<b>IUCN Management Category</b>	<b>IV</b>
Status	Designated
Type of Designation	National
Status Year	1960
Sublocation	IN-RJ
Governance Type	Sub-national ministry or agency
Management Authority	Chief Wildlife Warden, State Forest Department
Management Plan	Not Reported
International Criteria	Not Applicable