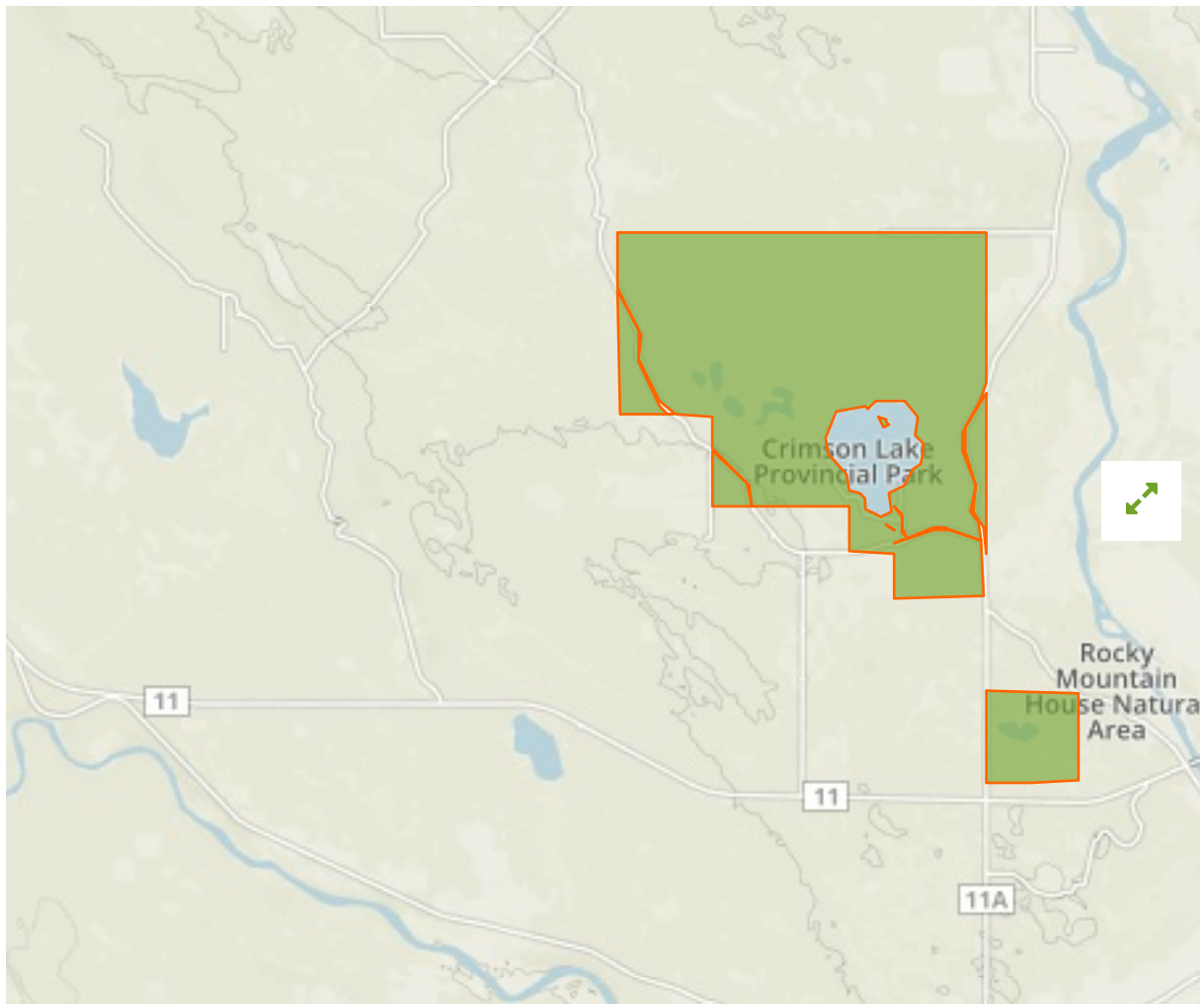


## Crimson Lake Provincial Park in Canada



The designations employed and the presentation of material on this map do not imply the expression of any opinion whatsoever on the part of the Secretariat of the United Nations concerning the legal status of any country, territory, city or area or of its authorities, or concerning the delimitation of its frontiers or boundaries.

WDPA ID

---

**18605**

Reported Area

---

**32.09 km<sup>2</sup>**

## Management Effectiveness Evaluations

---

No information available

## Attributes

---

<b>Original Name</b>	<b>Crimson Lake Provincial Park</b>
<b>English Designation</b>	<b>Provincial Park</b>
<b>IUCN Management Category</b>	<b>II</b>
Status	Designated
Type of Designation	National
Status Year	1955
Sublocation	CA-AB
Governance Type	Sub-national ministry or agency
Management Authority	Parks Division, Alberta Environment and Parks
Management Plan	<a href="#">View Management Plan</a>
International Criteria	Not Applicable