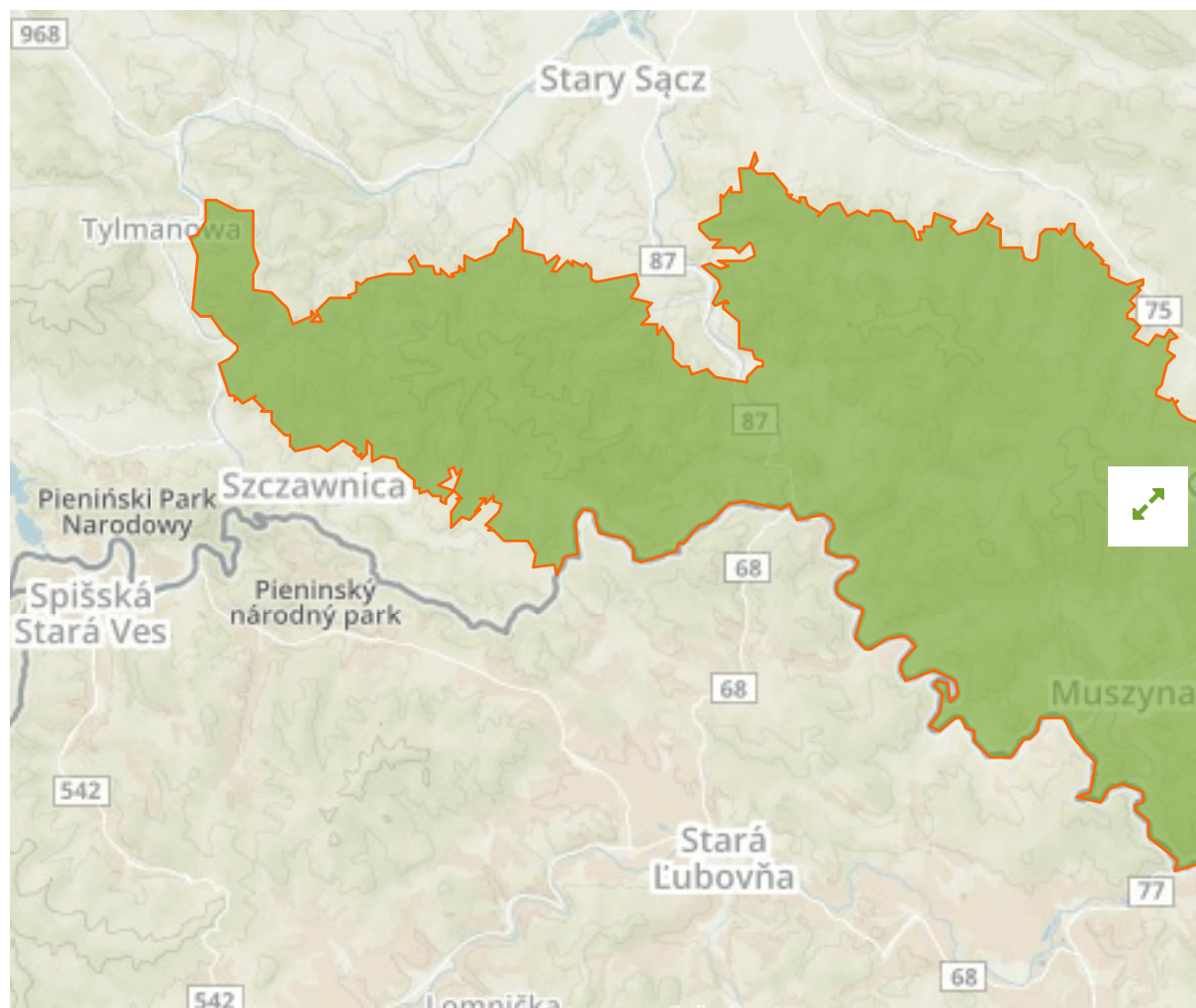


Popradzki Park Krajobrazowy in Poland



The designations employed and the presentation of material on this map do not imply the expression of any opinion whatsoever on the part of the Secretariat of the United Nations concerning the legal status of any country, territory, city or area or of its authorities, or concerning the delimitation of its frontiers or boundaries.

WDPA ID

19015

Reported Area

534.19 km²

Management Effectiveness Evaluations

No information available

Attributes

Original Name	Popradzki Park Krajobrazowy
English Designation	Landscape Park
IUCN Management Category	V
Status	Designated
Type of Designation	National
Status Year	1987
Sublocation	
Governance Type	Federal or national ministry or agency
Management Authority	Generalna Dyrekcja Ochrony Środowiska, ul. Wawelska 52/54, 00-922 Warszawa
Management Plan	Not Reported
International Criteria	Not Applicable

Site network breakdown

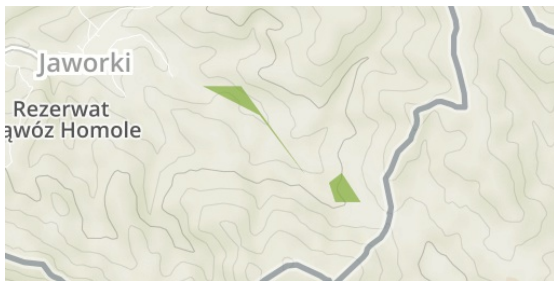
Transboundary sites

Biała Woda

in Poland

Ostoja Popradzka

in Poland



English Designation
Nature Reserve

IUCN Category
IV

WDPA ID Year of Designation
11448

Reported Area
0.4 km²

Małe Pieniny

in Poland



English Designation
Site of Community Importance
(Habitats Directive)

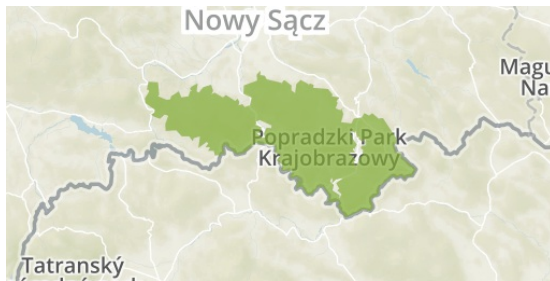
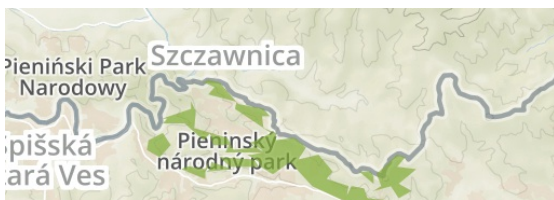
IUCN Category
Not Reported

WDPA ID Year of Designation
555530570

Reported Area
18.8 km²

Pieniny

in Slovakia



English Designation
Site of Community Importance
(Habitats Directive)

IUCN Category
Not Reported

WDPA ID Year of Designation
555530567

Reported Area
579.3 km²

Południowomałopolski Obszar Chronionego Krajobrazu

in Poland



English Designation
Protected Landscape Area

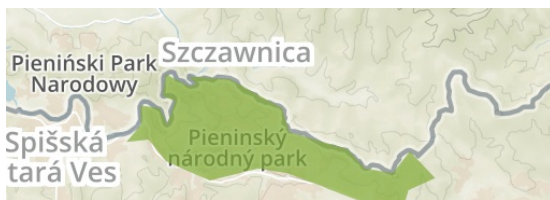
IUCN Category
Not Assigned

WDPA ID Year of Designation
555562793

Reported Area
3645.0 km²

Pieninský

in Slovakia





English Designation
Site of Community Importance
(Habitats Directive)

IUCN Category
Not Reported

WDPA ID **Year of Designation**
555579235

Reported Area
13.3 km²



English Designation
National Park; third level of
protection

IUCN Category
V

WDPA ID **Year of Designation**
646

Reported Area
37.5 km²

[Show all](#)