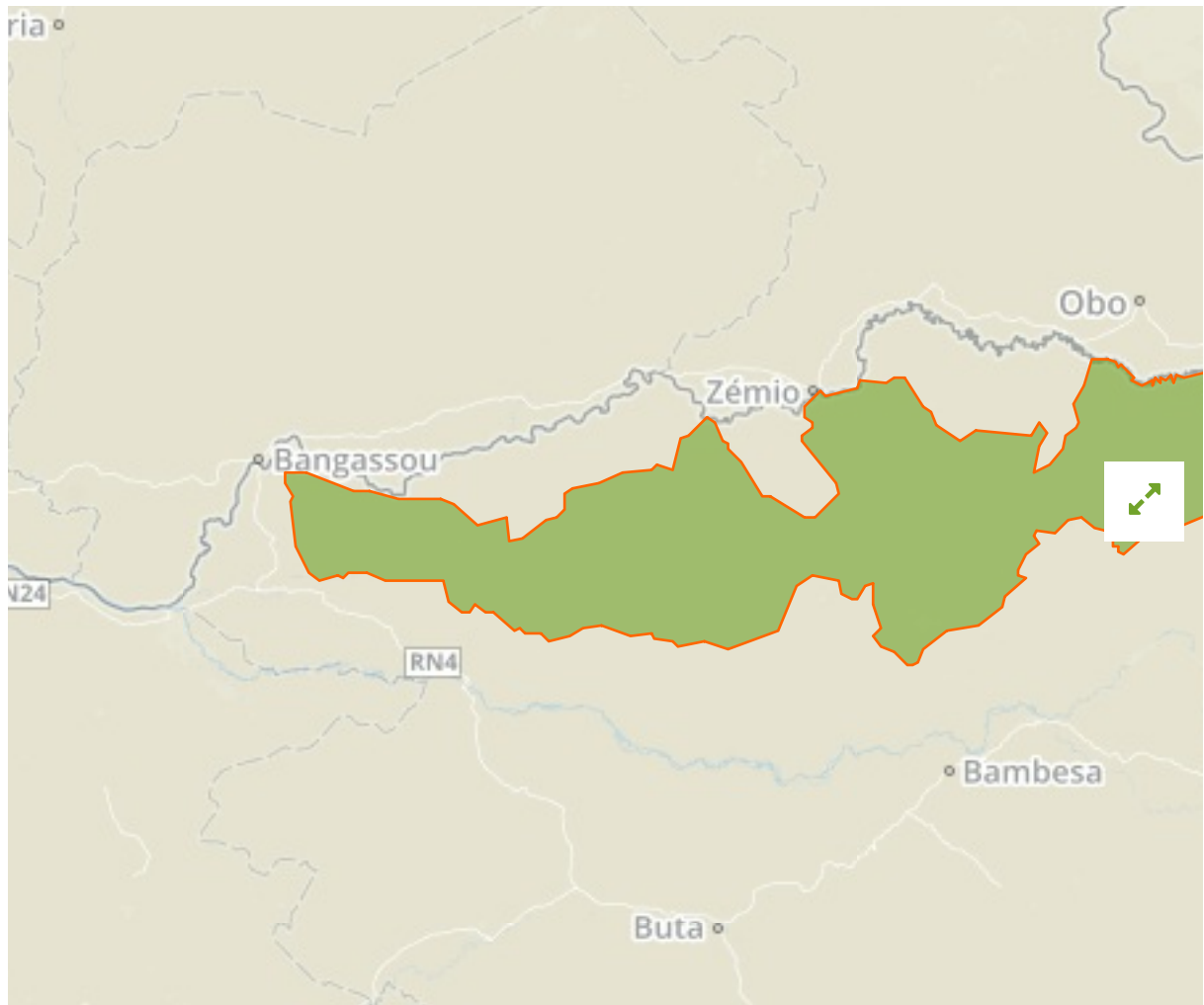


Bili-Uere in Democratic Republic of Congo



The designations employed and the presentation of material on this map do not imply the expression of any opinion whatsoever on the part of the Secretariat of the United Nations concerning the legal status of any country, territory, city or area or of its authorities, or concerning the delimitation of its frontiers or boundaries.

WDPA ID

20324

Reported Area

32748.38 km²

WWF

Management Effectiveness Evaluations

RAPPAM 2010

METT 2010

Attributes

Original Name	Bili-Uere
English Designation	Not Reported
IUCN Management Category	VI
Status	Designated
Type of Designation	National
Status Year	Not Reported
Sublocation	CD-OR
Governance Type	Not Reported
Management Authority	Not Reported
Management Plan	Not Reported
International Criteria	Not Applicable

Site network breakdown

Transboundary sites

Bangangai

in South Sudan



English Designation

Game Reserve

IUCN Category

VI

WDPA ID Year of Designation

1370

Reported Area

170.0 km²

Bomu

in Democratic Republic of Congo



English Designation

Wildlife Reserve

IUCN Category

Ib

WDPA ID Year of Designation

555512073

Reported Area

6541.5 km²