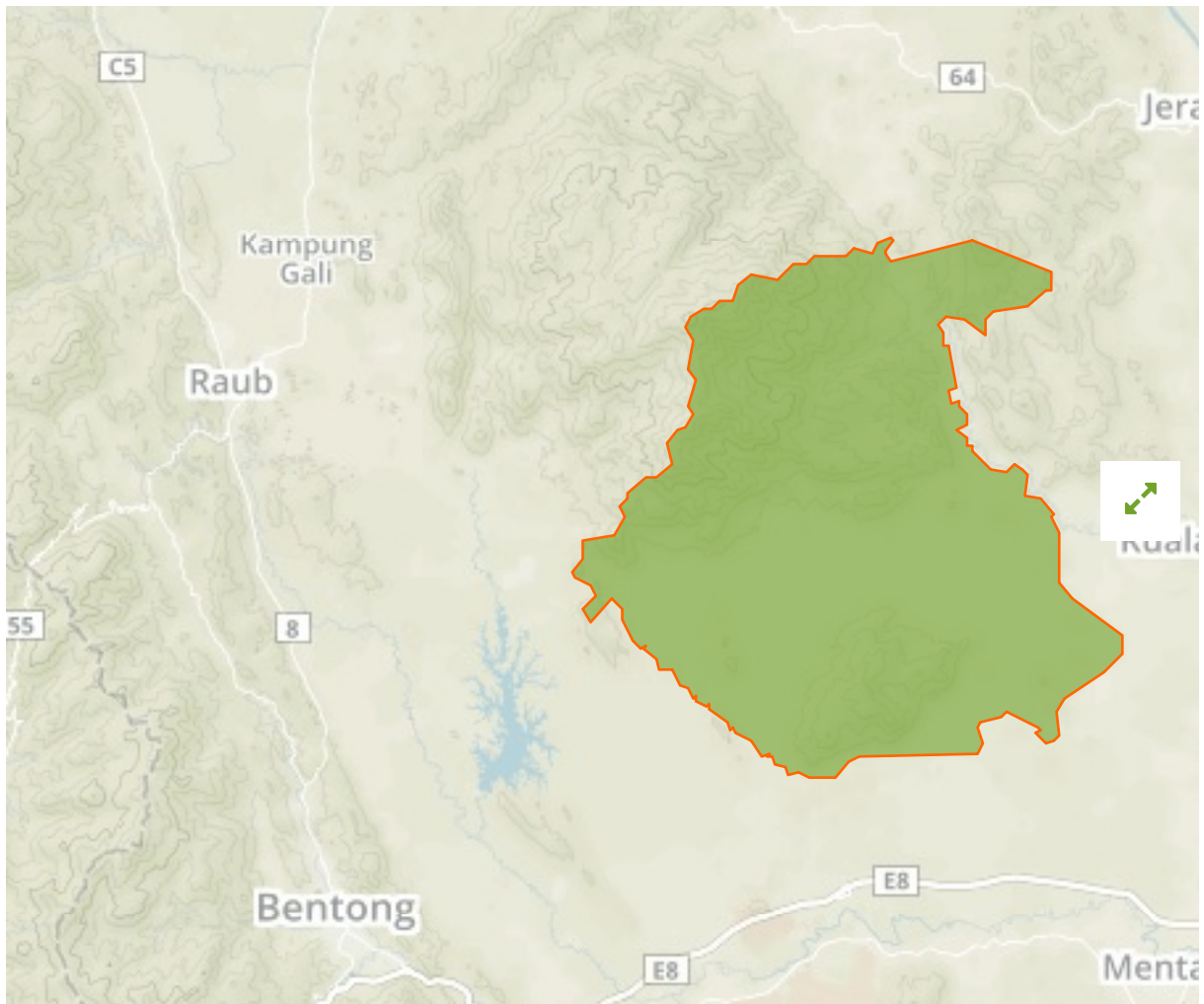


Krau in Malaysia



The designations employed and the presentation of material on this map do not imply the expression of any opinion whatsoever on the part of the Secretariat of the United Nations concerning the legal status of any country, territory, city or area or of its authorities, or concerning the delimitation of its frontiers or boundaries.

WDPA ID

3149

Reported Area

623.96 km²

Association of Southeast Asian Nations (ASEAN) Regional Centre for Nature Conservation (ARCBC)

Management Effectiveness Evaluations

No information available

Attributes

Original Name	Krau
English Designation	Wildlife Reserve
IUCN Management Category	IV
Status	Designated
Type of Designation	National
Status Year	1923
Sublocation	MY-06
Governance Type	Sub-national ministry or agency
Management Authority	Not Reported
Management Plan	Not Reported
International Criteria	Not Applicable