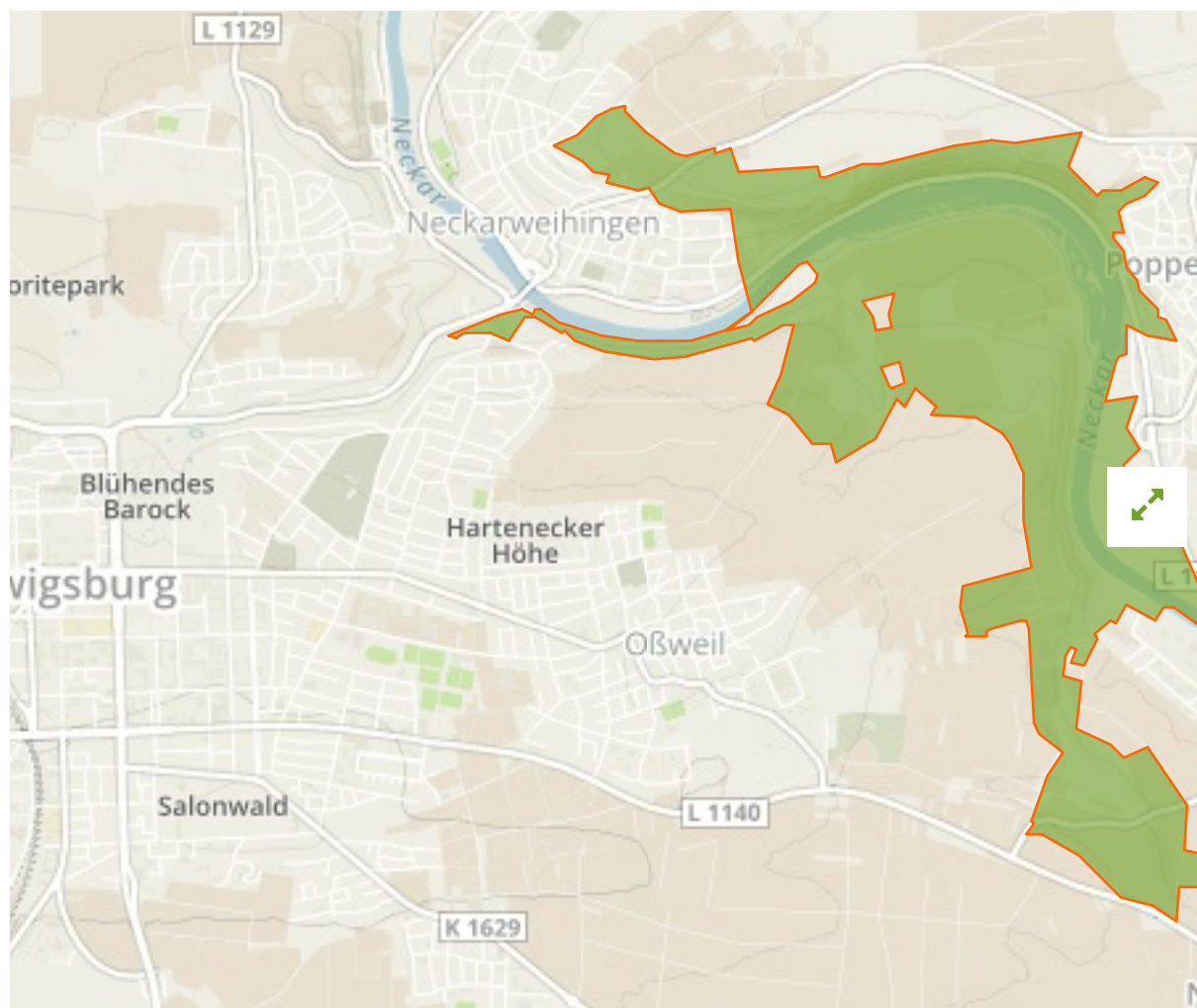


Neckartal zwischen den Neckarbrücken von Hochberg und Neckarweihingen mit Randgebieten, insbesondere Uhlberg, Lochholz und Beuzlen in Germany



The designations employed and the presentation of material on this map do not imply the expression of any opinion whatsoever on the part of the Secretariat of the United Nations concerning the legal status of any country, territory, city or area or of its authorities, or concerning the delimitation of its frontiers or boundaries.

WDPA ID

323152

Reported Area

3.81 km²

Data Provider

European Environment Agency (EEA)

Management Effectiveness Evaluations

No information available

Attributes

| | |
|---------------------------------|---|
| Original Name | Neckartal zwischen den Neckarbrücken von Hochberg und Neckarweihingen mit Randgebieten, insbesondere Uhlberg, Lochholz und Beuzlen |
| English Designation | Landscape Protection Area |
| IUCN Management Category | V |
| Status | Designated |
| Type of Designation | National |
| Status Year | 1988 |
| Sublocation | |
| Governance Type | Federal or national ministry or agency |
| Management Authority | Bundesamt für Naturschutz |
| Management Plan | Not Reported |
| International Criteria | Not Applicable |