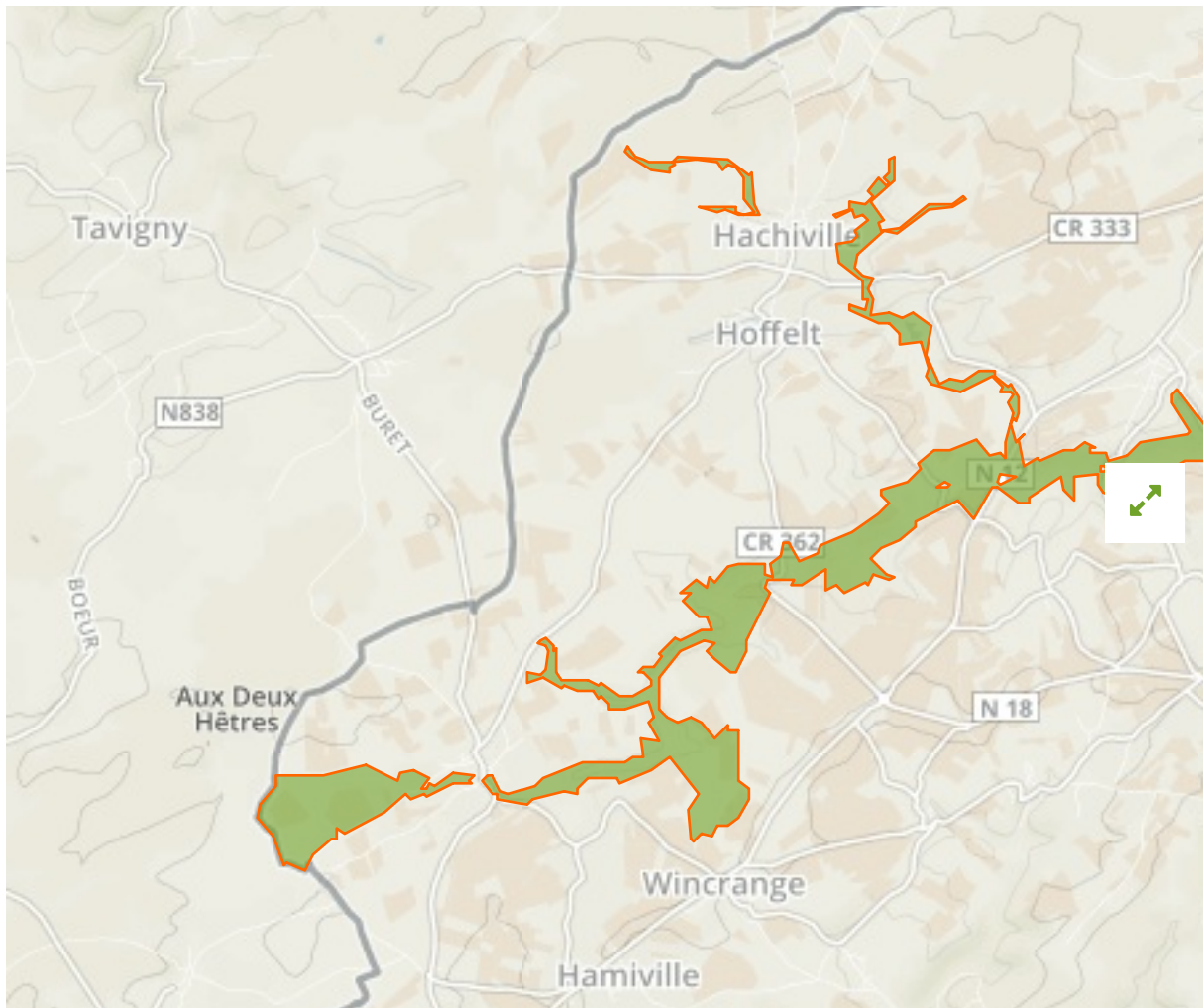


Vallée de la Tretterbaach in Luxembourg



The designations employed and the presentation of material on this map do not imply the expression of any opinion whatsoever on the part of the Secretariat of the United Nations concerning the legal status of any country, territory, city or area or of its authorities, or concerning the delimitation of its frontiers or boundaries.

WDPA ID

337477

Reported Area

4.68 km²

Management Effectiveness Evaluations

No information available

Attributes

Original Name	Vallée de la Tretterbaach
English Designation	ZSC - Natura 2000
IUCN Management Category	IV
Status	Designated
Type of Designation	National
Status Year	2004
Sublocation	
Governance Type	Federal or national ministry or agency
Management Authority	Ministère du Développement durable et des Infrastructures - Département de l'Environnement
Management Plan	Not Reported
International Criteria	Not Applicable

Site network breakdown

Transboundary sites

Hannerhaassel

in Belgium

Vallée de la Tretterbaach et affluents de la frontière à Asselborn

in Luxembourg



English Designation
 Certified Nature Reserve (Walloon Region)

IUCN Category
 IV

WDPA ID **Year of Designation**
 333164

Reported Area
 0.1 km²

PN des Deux Ourthes

in Belgium



English Designation
 Nature Park (Walloon Region)

IUCN Category
 V

WDPA ID **Year of Designation**
 386070

Reported Area
 760.4 km²

Vallée de la Tretterbaach

in Luxembourg



English Designation
 ZPS - Natura 2000

IUCN Category
 IV

WDPA ID **Year of Designation**
 337453

Reported Area
 31.5 km²

PN de la Haute-Sure et de la Foret d'Anlier

in Belgium



English Designation
 Nature Park (Walloon Region)

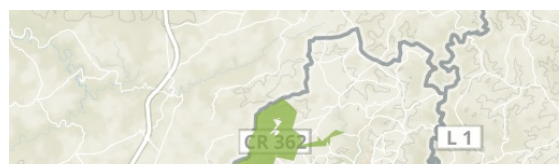
IUCN Category
 V

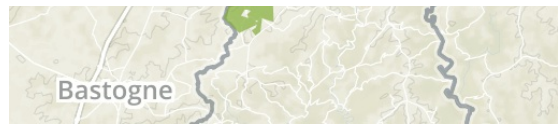
WDPA ID **Year of Designation**
 386106

Reported Area
 805.4 km²

Vallée de la Tretterbaach et affluents de la frontière à Asselborn

in Luxembourg





English Designation
Site of Community Importance
(Habitats Directive)

IUCN Category
Not Reported

WDPA ID **Year of Designation**
555536871

Reported Area
5.4 km²

[Show all](#)

English Designation
Special Protection Area (Birds
Directive)

IUCN Category
Not Reported

WDPA ID **Year of Designation**
555542212

Reported Area
31.5 km²