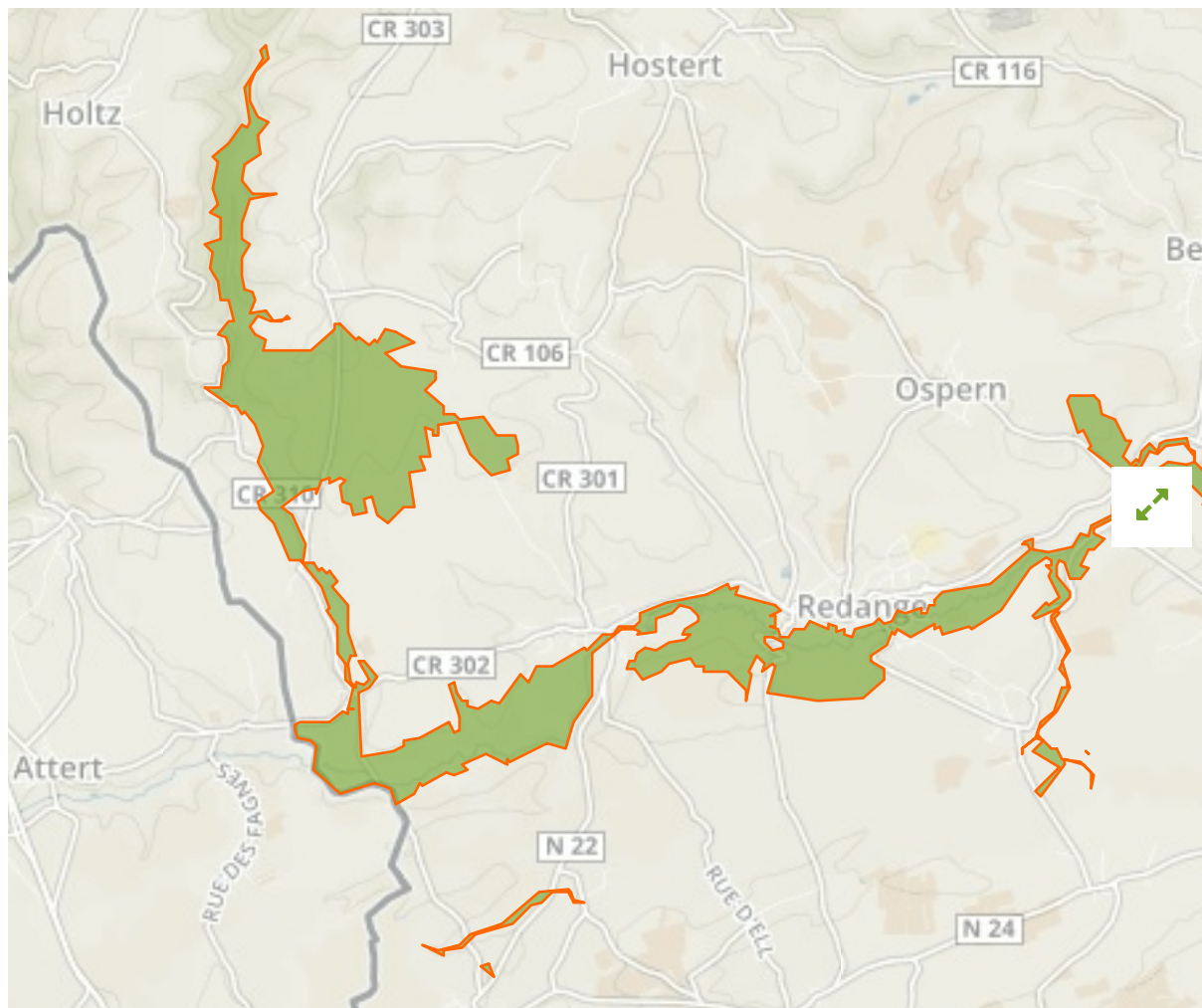


## Vallée de l'Attert de la frontière à Useldange in Luxembourg



The designations employed and the presentation of material on this map do not imply the expression of any opinion whatsoever on the part of the Secretariat of the United Nations concerning the legal status of any country, territory, city or area or of its authorities, or concerning the delimitation of its frontiers or boundaries.

WDPA ID

**337485**

Reported Area

**8.02 km<sup>2</sup>**

## Management Effectiveness Evaluations

---

No information available

## Attributes

---

<b>Original Name</b>	<b>Vallée de l'Attert de la frontière à Useldange</b>
<b>English Designation</b>	<b>ZSC - Natura 2000</b>
<b>IUCN Management Category</b>	<b>IV</b>
Status	Designated
Type of Designation	National
Status Year	2004
Sublocation	
Governance Type	Federal or national ministry or agency
Management Authority	Ministère du Développement durable et des Infrastructures - Département de l'Environnement
Management Plan	Not Reported
International Criteria	Not Applicable

## Site network breakdown

---

### Transboundary sites

---

**PN de la Vallée de l'Attert**  
in Belgium

**Vallée de l'Attert de la frontière à Useldange**  
in Luxembourg



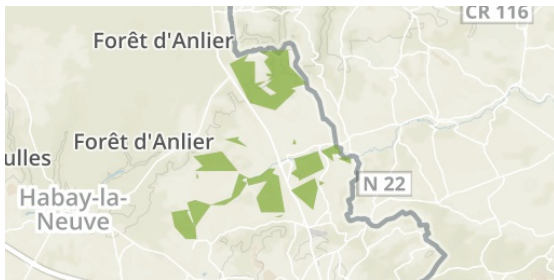
English Designation  
Nature Park (Walloon Region)

IUCN Category  
V

WDPA ID      Year of Designation  
386130

Reported Area  
71.1 km<sup>2</sup>

**Bassin de l'Attert**  
in Belgium



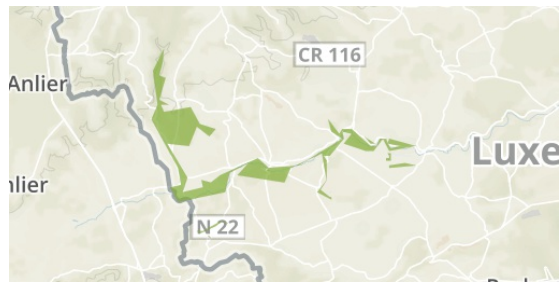
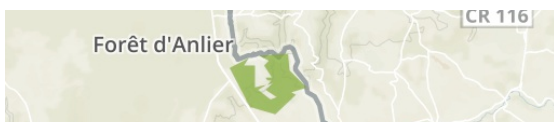
English Designation  
Special Protection Area (Birds Directive)

IUCN Category  
IV

WDPA ID      Year of Designation  
555623206

Reported Area  
13.4 km<sup>2</sup>

**Bassin de l'Attert**  
in Belgium



English Designation  
Site of Community Importance (Habitats Directive)

IUCN Category  
Not Reported

WDPA ID      Year of Designation  
555536879

Reported Area  
8.2 km<sup>2</sup>

**Vallées de l'Attert; de la Pall, de la Schwébech, de l'Aeschbech et de la Wëllerbaach**

in Luxembourg



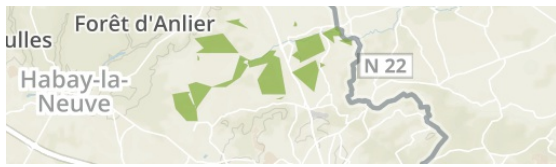
English Designation  
Special Protection Area (Birds Directive)

IUCN Category  
Not Reported

WDPA ID      Year of Designation  
555623255

Reported Area  
57.2 km<sup>2</sup>

**Attert**  
in Belgium



English Designation  
Site of Community Importance  
(Habitats Directive)

IUCN Category  
IV

WDPA ID      Year of Designation  
555623434

Reported Area  
13.4 km<sup>2</sup>



English Designation  
Forest Reserve (Walloon Region)

IUCN Category  
VI

WDPA ID      Year of Designation  
7183

Reported Area  
0.1 km<sup>2</sup>