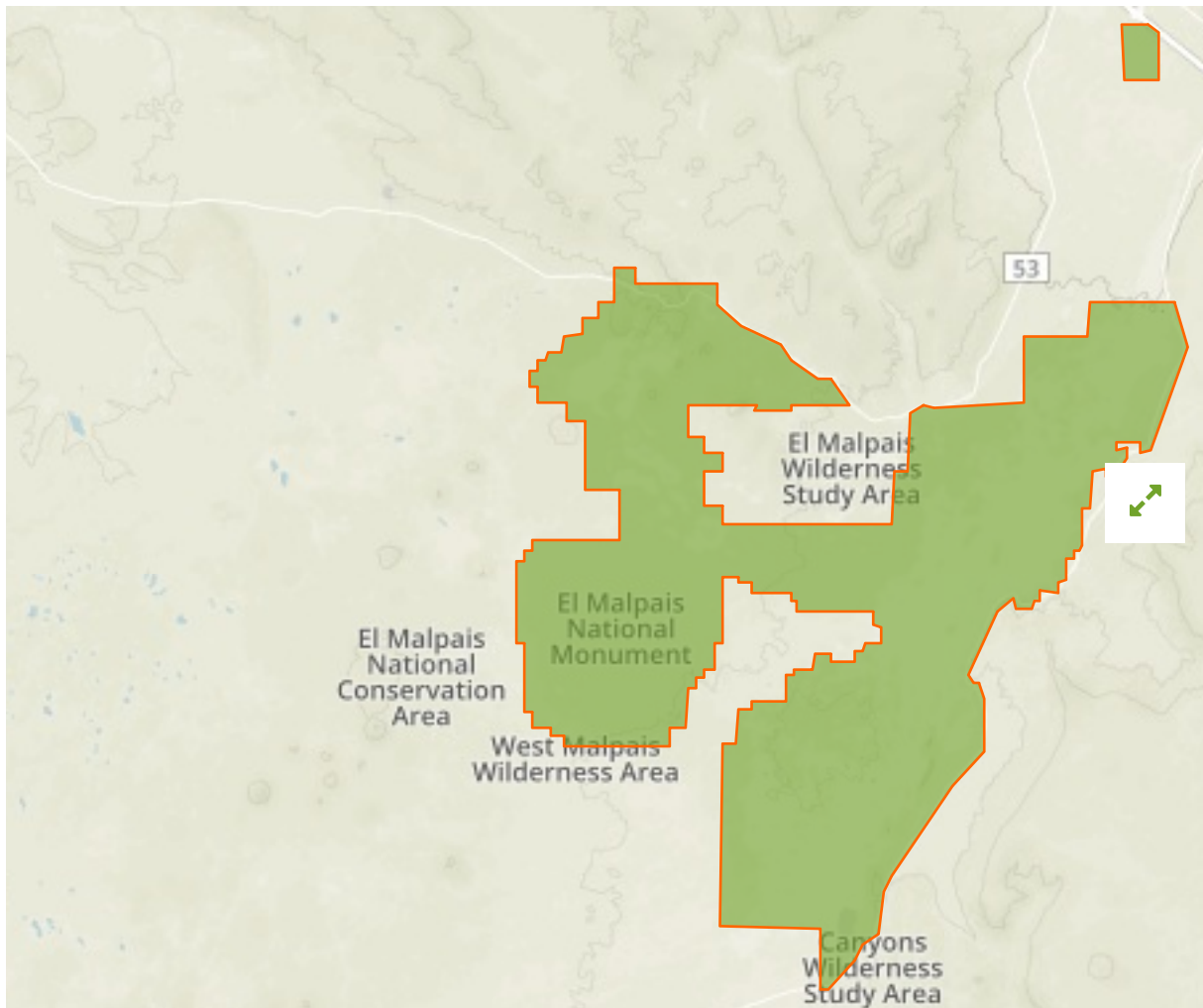


El Malpais in United States of America



The designations employed and the presentation of material on this map do not imply the expression of any opinion whatsoever on the part of the Secretariat of the United Nations concerning the legal status of any country, territory, city or area or of its authorities, or concerning the delimitation of its frontiers or boundaries.

WDPA ID

368210

Reported Area

473.01 km²

i Data Provider

US Geological Survey, Gap Analysis Program (GAP), National Operations Office, Boise State University

Management Effectiveness Evaluations

No information available

Attributes

Original Name	El Malpais
English Designation	National Monument
IUCN Management Category	V
Status	Designated
Type of Designation	National
Status Year	Not Reported
Sublocation	US-NM
Governance Type	Collaborative governance
Management Authority	National Park Service
Management Plan	Not Reported
International Criteria	Not Applicable