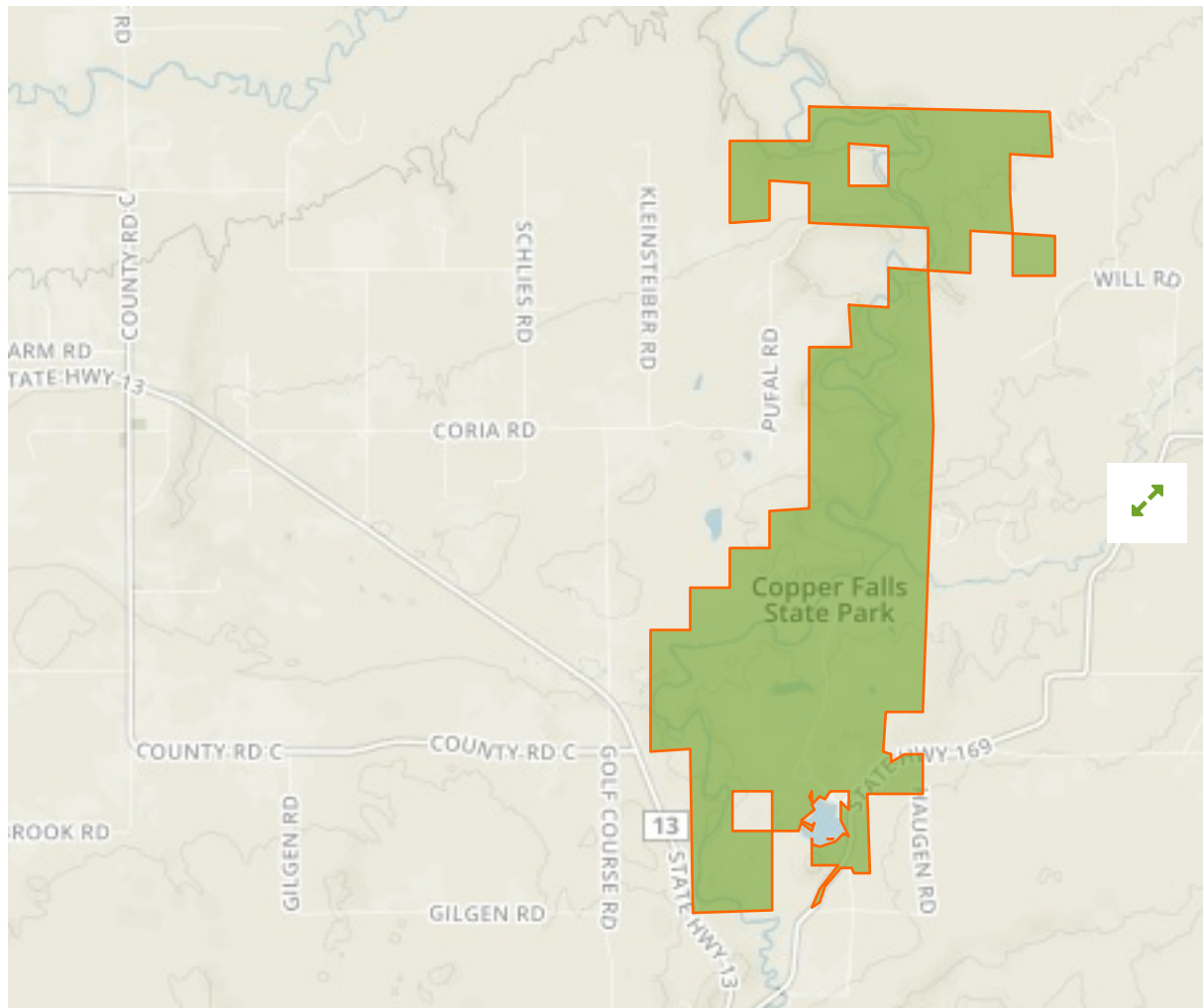


Copper Falls in United States of America



The designations employed and the presentation of material on this map do not imply the expression of any opinion whatsoever on the part of the Secretariat of the United Nations concerning the legal status of any country, territory, city or area or of its authorities, or concerning the delimitation of its frontiers or boundaries.

WDPA ID

4444483

Reported Area

13.37 km²

i Data Provider

US Geological Survey, Gap Analysis Program (GAP), National Operations Office, Boise State University

Management Effectiveness Evaluations

No information available

Attributes

Original Name	Copper Falls
English Designation	State Park
IUCN Management Category	III
Status	Designated
Type of Designation	National
Status Year	1929
Sublocation	US-WI
Governance Type	Collaborative governance
Management Authority	Private / State Department of Natural Resources
Management Plan	Not Reported
International Criteria	Not Applicable