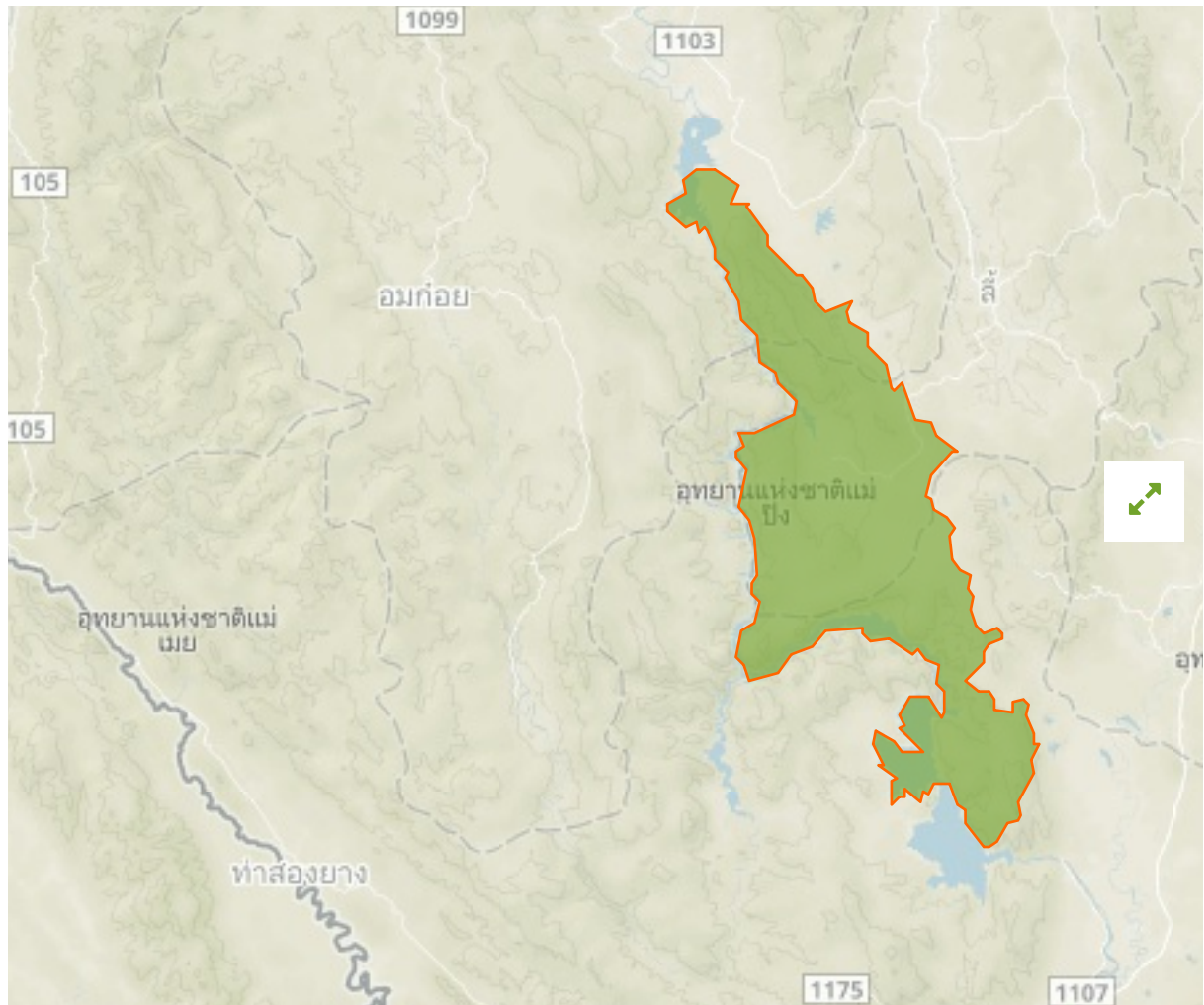


Mae Ping in Thailand



The designations employed and the presentation of material on this map do not imply the expression of any opinion whatsoever on the part of the Secretariat of the United Nations concerning the legal status of any country, territory, city or area or of its authorities, or concerning the delimitation of its frontiers or boundaries.

WDPA ID

4675

Reported Area

1003.75 km²

Management Effectiveness Evaluations

Birdlife IBA 2007

Attributes

Original Name	Mae Ping
English Designation	National Park
IUCN Management Category	II
Status	Designated
Type of Designation	National
Status Year	1981
Sublocation	TH-51
Governance Type	Federal or national ministry or agency
Management Authority	Department of National Park, Wildlife and Plant Conservation Office of National Park
Management Plan	Available
International Criteria	Not Applicable