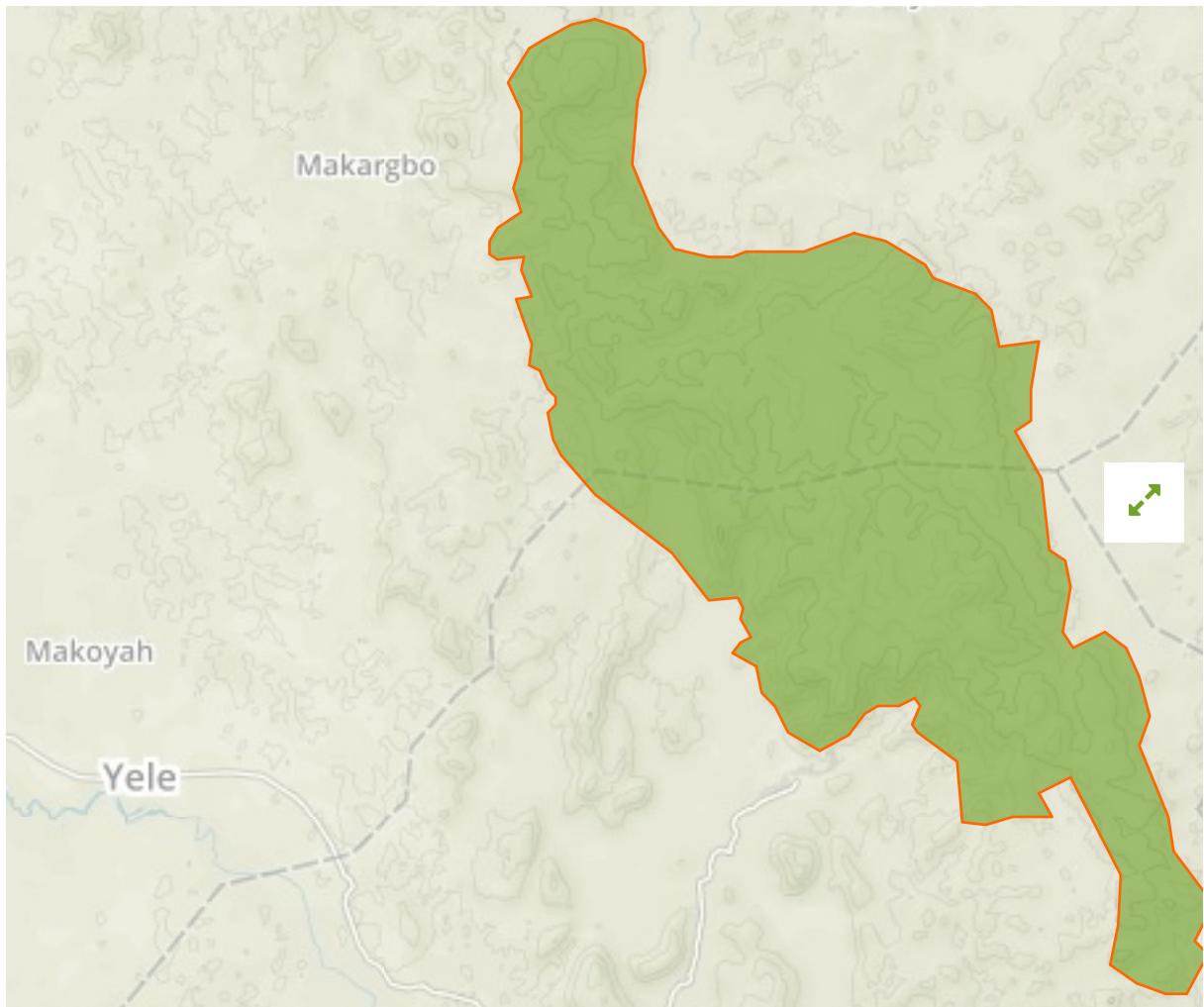


## Kangari Hills in Sierra Leone



The designations employed and the presentation of material on this map do not imply the expression of any opinion whatsoever on the part of the Secretariat of the United Nations concerning the legal status of any country, territory, city or area or of its authorities, or concerning the delimitation of its frontiers or boundaries.

WDPA ID

---

**5180**

Reported Area

---

**212.1 km<sup>2</sup>**

Vulnerability Assessment

---



Present [↗](#)

### **i Data Provider**

Ministry of Lands, Country Planning and the Environment, Environment Protection Agency, Sierra Leone

## Management Effectiveness Evaluations

---

METT 2006

Birdlife IBA 2005

## Attributes

---

<b>Original Name</b>	<b>Kangari Hills</b>
<b>English Designation</b>	<b>Forest Reserve</b>
<b>IUCN Management Category</b>	<b>VI</b>
Status	Designated
Type of Designation	National
Status Year	2012
Sublocation	SL-S
Governance Type	Not Reported
Management Authority	Not Reported
Management Plan	Not Reported
International Criteria	Not Applicable