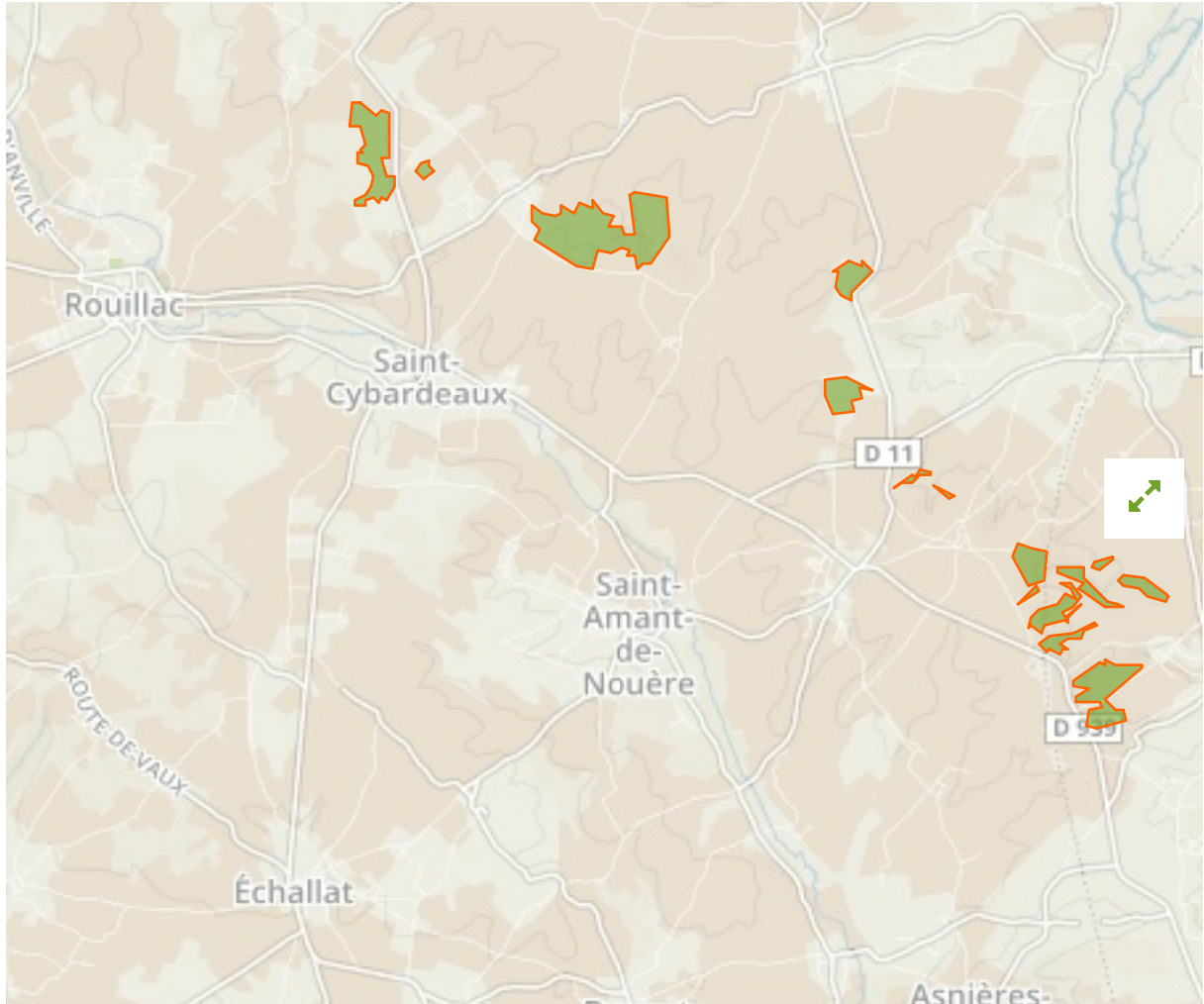


# Côteaux calcaires entre les Bouchauds et Marsac in France



The designations employed and the presentation of material on this map do not imply the expression of any opinion whatsoever on the part of the Secretariat of the United Nations concerning the legal status of any country, territory, city or area or of its authorities, or concerning the delimitation of its frontiers or boundaries.

WDPA ID

---

**555526181**

Reported Area

---

**2.22 km<sup>2</sup>**

## Management Effectiveness Evaluations

---

No information available

## Attributes

---

<b>Original Name</b>	<b>Côteaux calcaires entre les Bouchauds et Marsac</b>
<b>English Designation</b>	<b>Site of Community Importance (Habitats Directive)</b>
<b>IUCN Management Category</b>	<b>Not Reported</b>
Status	Designated
Type of Designation	Regional
Status Year	1995
Sublocation	
Governance Type	Federal or national ministry or agency
Management Authority	Not Reported
Management Plan	Not Reported
International Criteria	Not Applicable