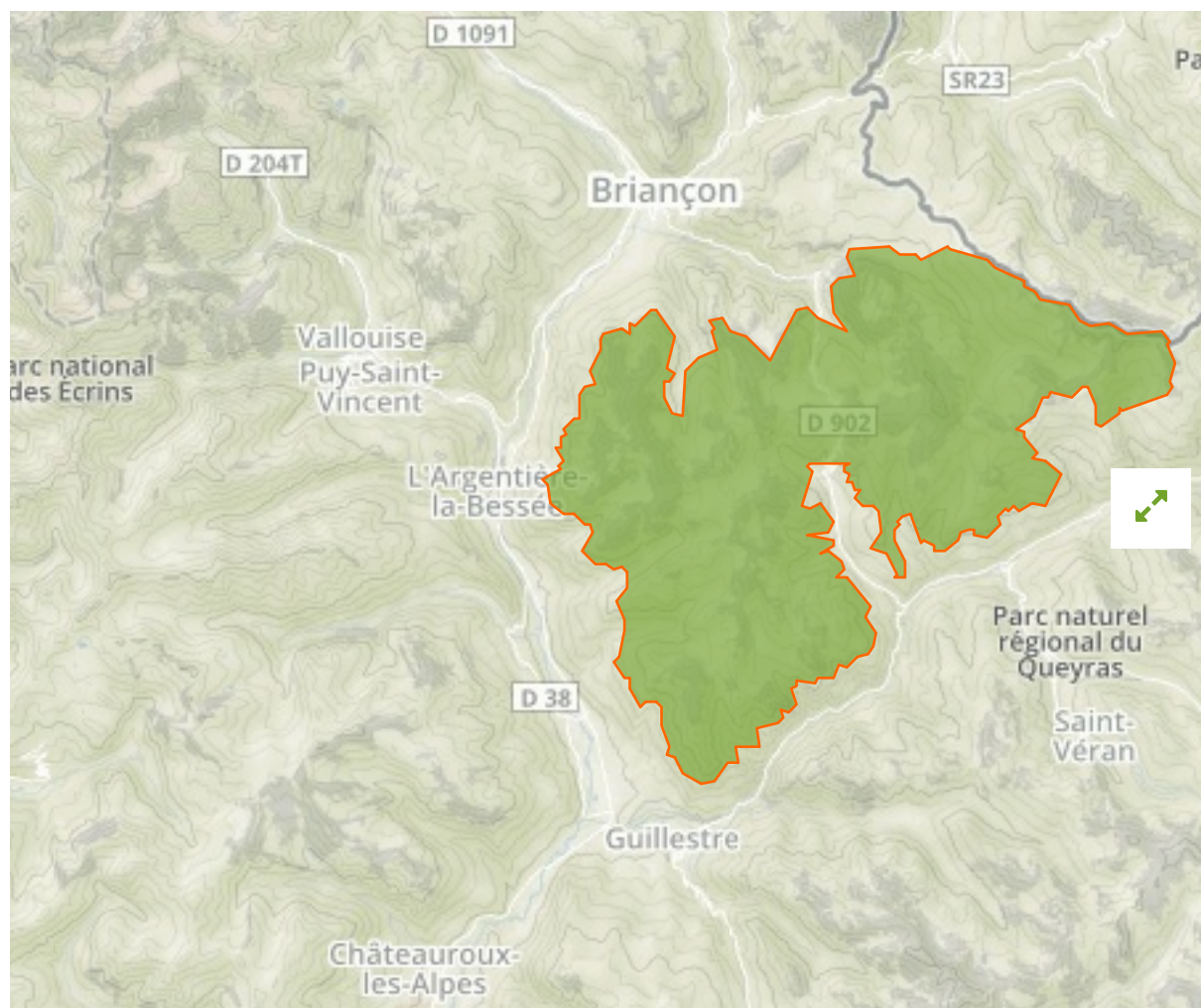


Rochebrune - Izoard - Vallée de la Cerveyrette in France



The designations employed and the presentation of material on this map do not imply the expression of any opinion whatsoever on the part of the Secretariat of the United Nations concerning the legal status of any country, territory, city or area or of its authorities, or concerning the delimitation of its frontiers or boundaries.

WDPA ID

555526794

Reported Area

268.01 km²

Management Effectiveness Evaluations

No information available

Attributes

Original Name	Rochebrune - Izoard - Vallée de la Cerveyrette
English Designation	Site of Community Importance (Habitats Directive)
IUCN Management Category	Not Reported
Status	Designated
Type of Designation	Regional
Status Year	1996
Sublocation	
Governance Type	Federal or national ministry or agency
Management Authority	Not Reported
Management Plan	View Management Plan
International Criteria	Not Applicable

Site network breakdown

Transboundary sites

Ristolas - Mont-Viso

in France

Haut Guil - Mont Viso - Val Preveyre

in France



English Designation
National Nature Reserve

IUCN Category
IV

WDPA ID Year of Designation
388662

Reported Area
23.0 km²

Pra - Barant

in Italy



English Designation
Site of Community Importance
(Habitats Directive)

IUCN Category
Not Reported

WDPA ID Year of Designation
555528074

Reported Area
41.2 km²

Gruppo del Monviso e Bosco dell'Alevè

in Italy



English Designation
Site of Community Importance
(Habitats Directive)

IUCN Category
Not Reported

WDPA ID Year of Designation
555526795

Reported Area
188.3 km²

Vallée du Haut Guil

in France



English Designation
Special Protection Area (Birds
Directive)

IUCN Category
Not Reported

WDPA ID Year of Designation
555539573

Reported Area
63.7 km²

Gruppo del Monviso e Bosco dell'Alevè

in Italy





English Designation
Special Protection Area (Birds Directive)

IUCN Category
Not Reported

WDPA ID **Year of Designation**
555540060

Reported Area
72.3 km²



English Designation
Site of Community Importance (Habitats Directive)

IUCN Category
Not Reported

WDPA ID **Year of Designation**
555580374

Reported Area
72.3 km²

[Show all](#)