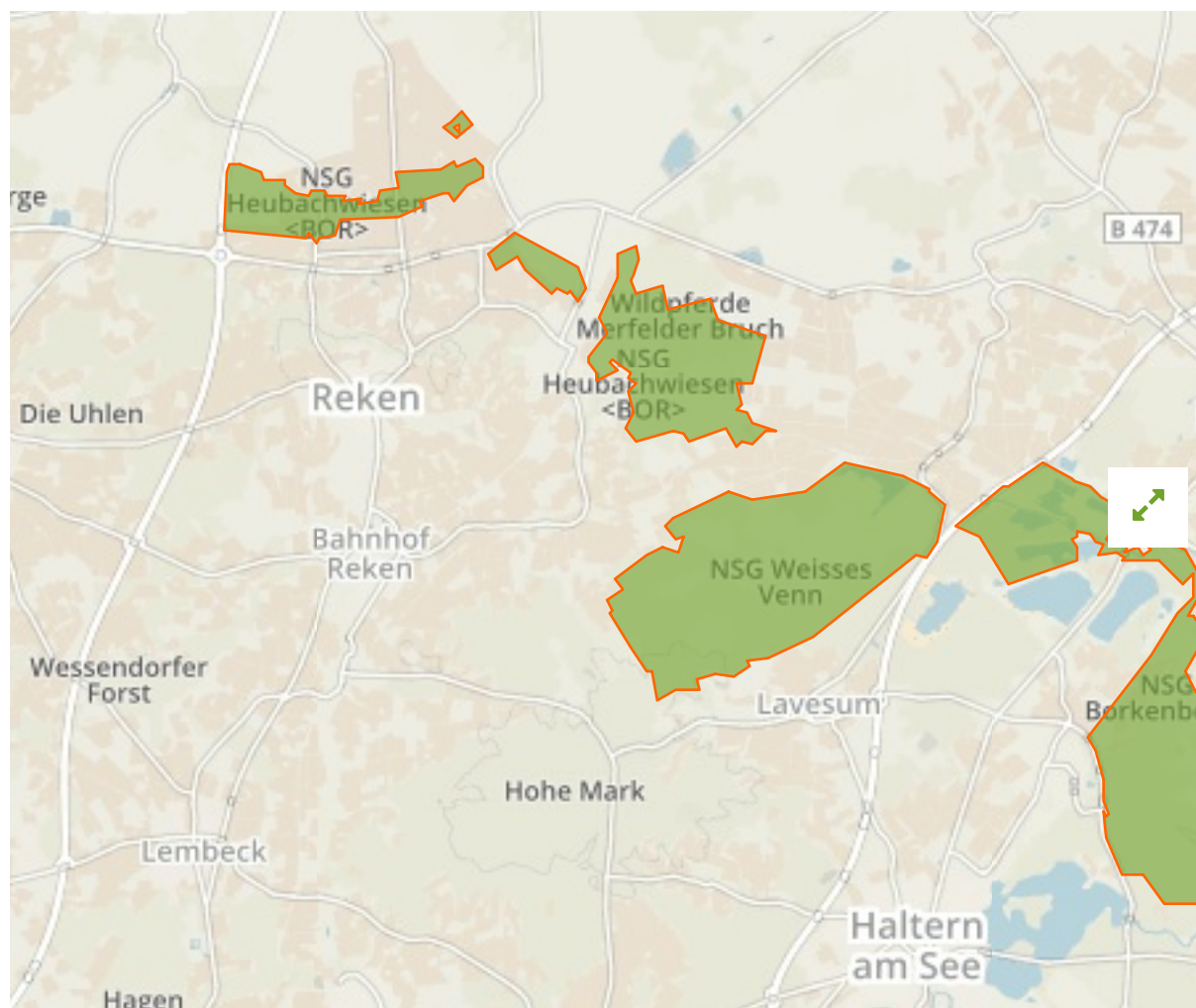


## VSG 'Heubachniederung; Lavesumer Bruch und Borkenberge' in Germany



The designations employed and the presentation of material on this map do not imply the expression of any opinion whatsoever on the part of the Secretariat of the United Nations concerning the legal status of any country, territory, city or area or of its authorities, or concerning the delimitation of its frontiers or boundaries.

WDPA ID

**555537476**

Reported Area

**50.77 km<sup>2</sup>**

## Management Effectiveness Evaluations

---

No information available

## Attributes

---

<b>Original Name</b>	<b>VSG 'Heubachniederung; Lavesumer Bruch und Borkenberge'</b>
<b>English Designation</b>	<b>Special Protection Area (Birds Directive)</b>
<b>IUCN Management Category</b>	<b>Not Reported</b>
Status	Designated
Type of Designation	Regional
Status Year	1999
Sublocation	
Governance Type	Federal or national ministry or agency
Management Authority	Biologische Station Kreis RE; Biologische Station Kreis Recklinghausen e.V.
Management Plan	Not Reported
International Criteria	Not Applicable