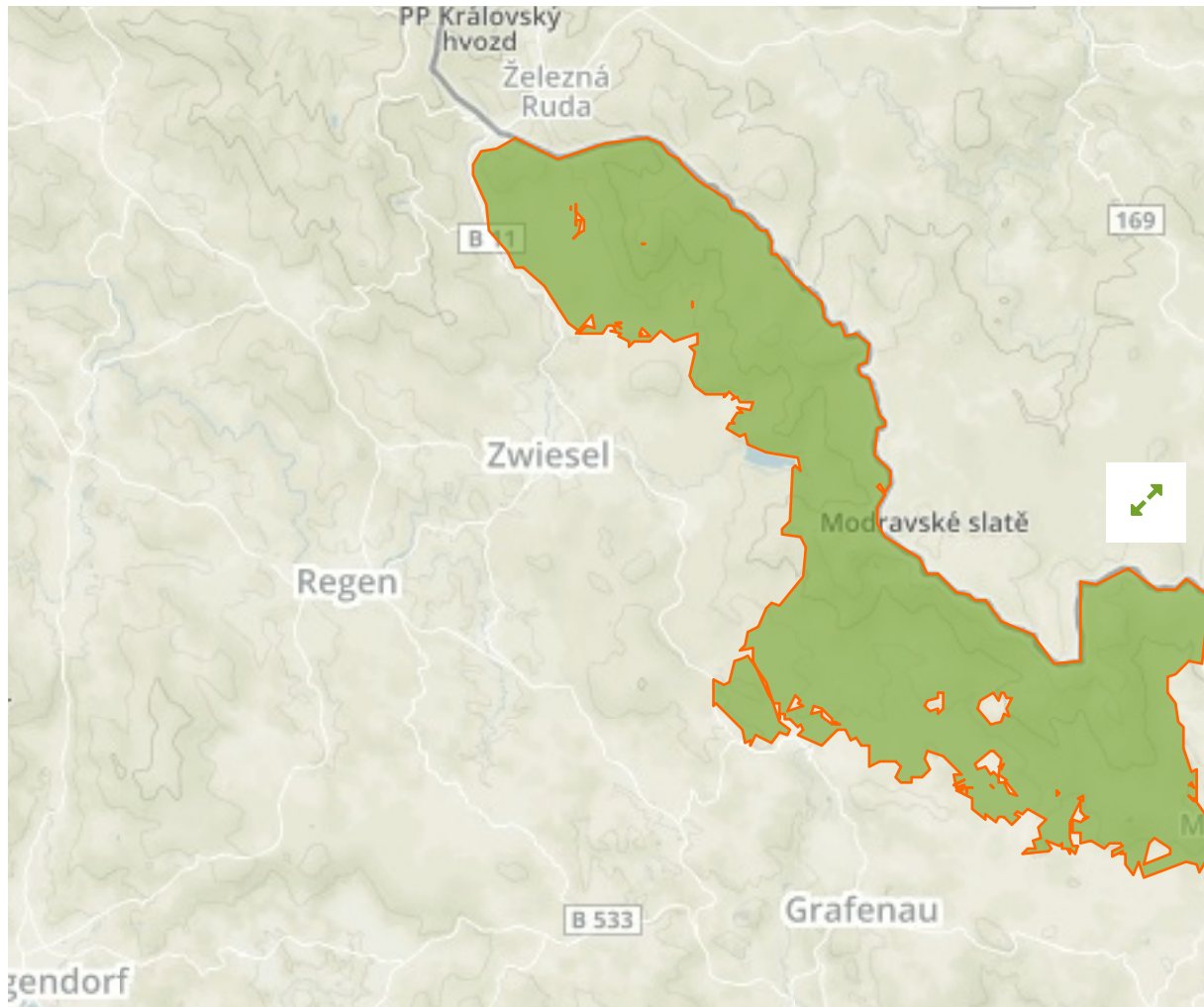


Nationalpark Bayerischer Wald in Germany



The designations employed and the presentation of material on this map do not imply the expression of any opinion whatsoever on the part of the Secretariat of the United Nations concerning the legal status of any country, territory, city or area or of its authorities, or concerning the delimitation of its frontiers or boundaries.

WDPA ID

555537858

Reported Area

242.06 km²

Management Effectiveness Evaluations

No information available

Attributes

Original Name	Nationalpark Bayerischer Wald
English Designation	Special Protection Area (Birds Directive)
IUCN Management Category	Not Reported
Status	Designated
Type of Designation	Regional
Status Year	2004
Sublocation	
Governance Type	Federal or national ministry or agency
Management Authority	Bayern: Ministerium Bayerisches Staatsministerium für Landesentwicklung und Umweltfragen
Management Plan	View Management Plan
International Criteria	Not Applicable

Site network breakdown

Transboundary sites

Šumava

in Czech Republic

Bílá Strž

in Czech Republic



English Designation
UNESCO-MAB Biosphere Reserve

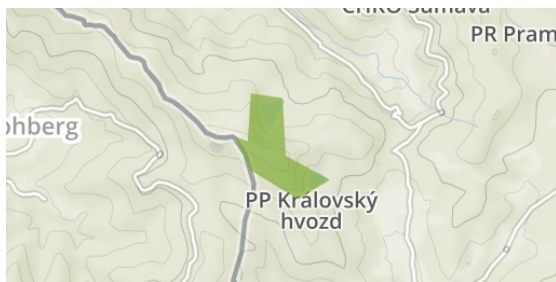
IUCN Category
Not Applicable

WDPA ID Year of Designation
20015

Reported Area
1671.2 km²

Černé a Čertovo jezero

in Czech Republic



English Designation
National Nature Reserve

IUCN Category
III

WDPA ID Year of Designation
342013

Reported Area
2.1 km²

Otovský potok

in Czech Republic



English Designation
National Nature Reserve

IUCN Category
III

WDPA ID Year of Designation
342000

Reported Area
0.8 km²

Kyselovský les

in Czech Republic



English Designation
Nature Reserve

IUCN Category
IV

WDPA ID Year of Designation
342746

Reported Area
0.1 km²

Buková slat'

in Czech Republic



English Designation
Nature Reserve

IUCN Category
IV

WDPA ID Year of Designation
342878

Reported Area
0.4 km²

English Designation
Nature Monument

IUCN Category
IV

WDPA ID Year of Designation
343401

Reported Area
0.2 km²

[Show all](#)