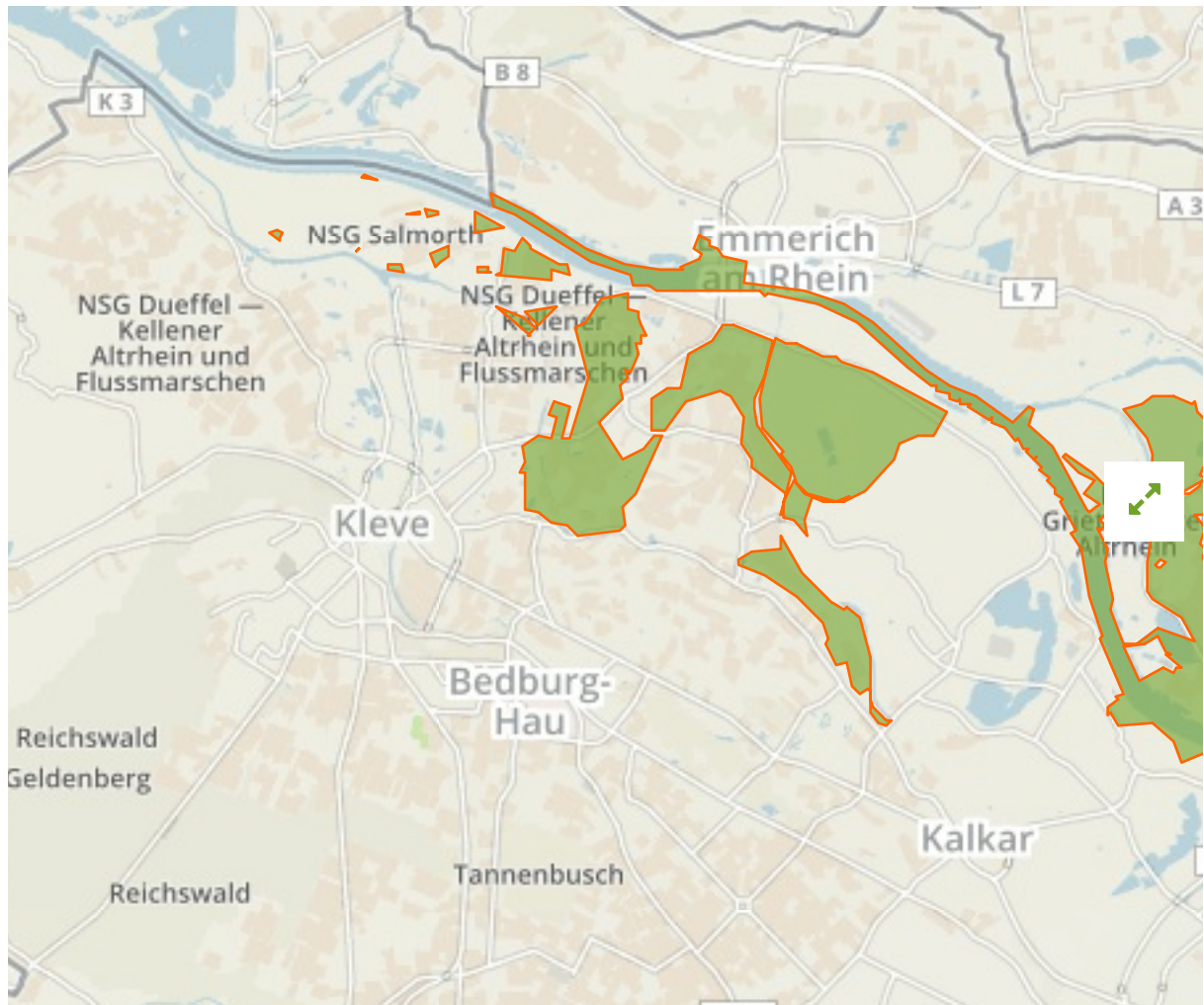


## LSG-Rheinufer in Germany



The designations employed and the presentation of material on this map do not imply the expression of any opinion whatsoever on the part of the Secretariat of the United Nations concerning the legal status of any country, territory, city or area or of its authorities, or concerning the delimitation of its frontiers or boundaries.

WDPA ID

**555560850**

Reported Area

**34.81 km<sup>2</sup>**

## Management Effectiveness Evaluations

---

No information available

## Attributes

---

|                                 |  |
|---------------------------------|--|
| <b>Original Name</b>            | <b>LSG-Rheinufer</b>                   |
| <b>English Designation</b>      | <b>Landscape Protection Area</b>       |
| <b>IUCN Management Category</b> | <b>V</b>                               |
| Status                          | Designated                             |
| Type of Designation             | National                               |
| Status Year                     | 1972                                   |
| Sublocation                     |  |
| Governance Type                 | Federal or national ministry or agency |
| Management Authority            | Bundesamt für Naturschutz              |
| Management Plan                 | Not Reported                           |
| International Criteria          | Not Applicable                         |

## Site network breakdown

---

### Transboundary sites

---

**NSG Emmericher Ward**

in Germany

**NSG Die Moiedtjes**

in Germany



English Designation  
Nature Reserve

IUCN Category  
IV

WDPA ID      Year of Designation  
162940

Reported Area  
3.1 km<sup>2</sup>

**NSG Dueffel - Kellener Altrhein und Flussmarschen**

in Germany



English Designation  
Nature Reserve

IUCN Category  
IV

WDPA ID      Year of Designation  
318308

Reported Area  
38.1 km<sup>2</sup>

**NSG Emmericher Ward**

in Germany



English Designation  
Nature Reserve

IUCN Category  
IV

WDPA ID      Year of Designation  
318292

Reported Area  
0.3 km<sup>2</sup>

**NSG Salmorth; nur Teilfläche**

in Germany



English Designation  
Site of Community Importance  
(Habitats Directive)

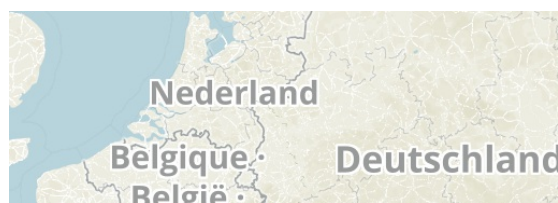
IUCN Category  
Not Reported

WDPA ID      Year of Designation  
555519361

Reported Area  
9.3 km<sup>2</sup>

**Rhein-Fischschutzzonen zwischen Emmerich und Bad Honnef**

in Germany





**English Designation**  
Site of Community Importance  
(Habitats Directive)

**IUCN Category**  
Not Reported

**WDPA ID**      **Year of Designation**  
555519363

**Reported Area**  
2.5 km<sup>2</sup>

[Show all](#)

**English Designation**  
Site of Community Importance  
(Habitats Directive)

**IUCN Category**  
Not Reported

**WDPA ID**      **Year of Designation**  
555519677

**Reported Area**  
23.4 km<sup>2</sup>