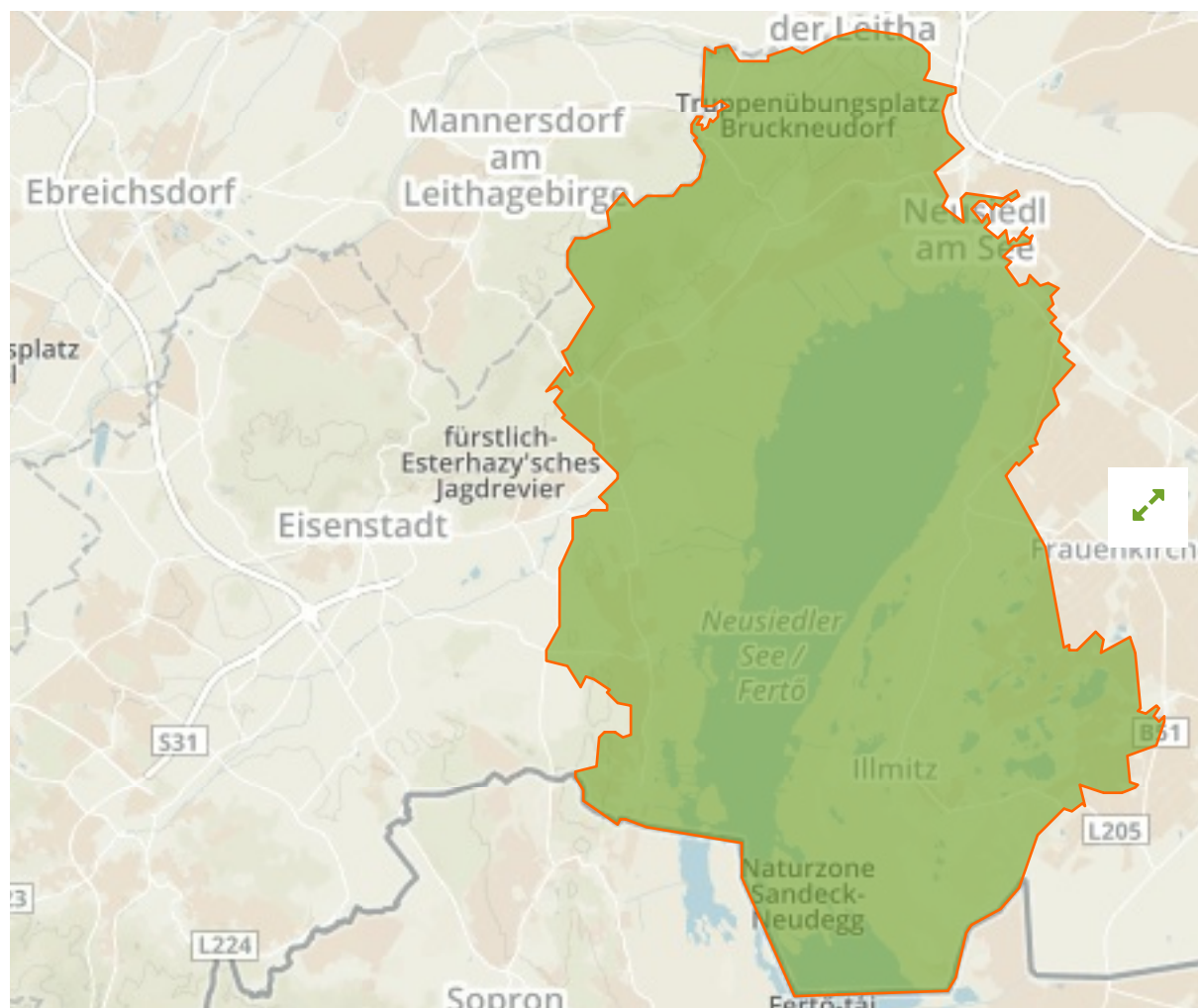


Neusiedler See - Nordöstliches Leithagebirge in

Austria



The designations employed and the presentation of material on this map do not imply the expression of any opinion whatsoever on the part of the Secretariat of the United Nations concerning the legal status of any country, territory, city or area or of its authorities, or concerning the delimitation of its frontiers or boundaries.

WDPA ID

555577882

Reported Area

571.25 km²

Management Effectiveness Evaluations

No information available

Attributes

Original Name	Neusiedler See - Nordöstliches Leithagebirge
English Designation	Site of Community Importance (Habitats Directive)
IUCN Management Category	Not Reported
Status	Designated
Type of Designation	Regional
Status Year	1995
Sublocation	
Governance Type	Federal or national ministry or agency
Management Authority	Amt Der Burgenländischen Landesregierung; Abt. 5/Iii Natur- Und UmweltschutzUndNationalpar kverwaltung Neusiedler See - Seewinkel
Management Plan	Not Reported
International Criteria	Not Applicable

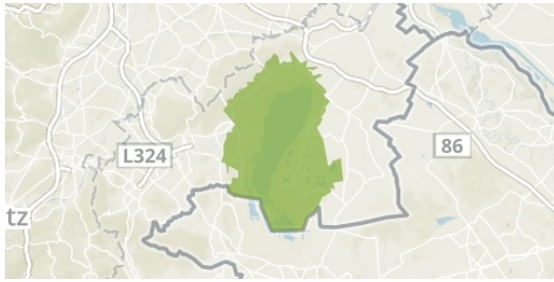
Site network breakdown

Transboundary sites

Neusiedler See und Umgebung

Naturpark Rosalia-Koglborg

in Austria



English Designation
landscape and nature protection
area

IUCN Category

IV

WDPA ID Year of Designation
1218

Reported Area

500.9 km²

Fertő tó

in Hungary



English Designation
Site of Community Importance
(Habitats Directive)

IUCN Category

Not Reported

WDPA ID Year of Designation
555527420

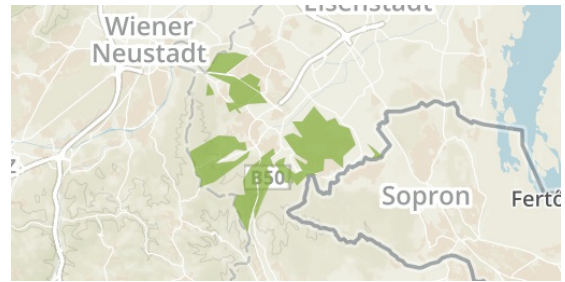
Reported Area

113.0 km²

Fertő tó

in Hungary

in Austria



English Designation
Nature Park

IUCN Category

V

WDPA ID Year of Designation
555513711

Reported Area

72.4 km²

Fertőmelléki dombosor

in Hungary



English Designation
Site of Community Importance
(Habitats Directive)

IUCN Category

Not Reported

WDPA ID Year of Designation
555527421

Reported Area

25.6 km²

Neusiedler See - Nordöstliches Leithagebirge

in Austria



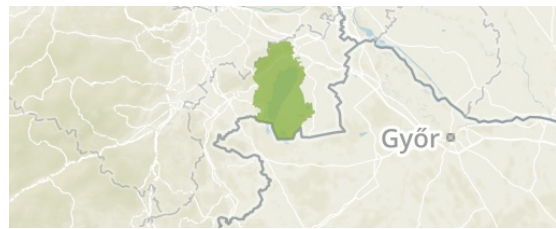


English Designation
Special Protection Area (Birds Directive)

IUCN Category
Not Reported

WDPA ID **Year of Designation**
555539834

Reported Area
87.0 km²



English Designation
Special Protection Area (Birds Directive)

IUCN Category
Not Reported

WDPA ID **Year of Designation**
555577575

Reported Area
571.2 km²

[Show all](#)