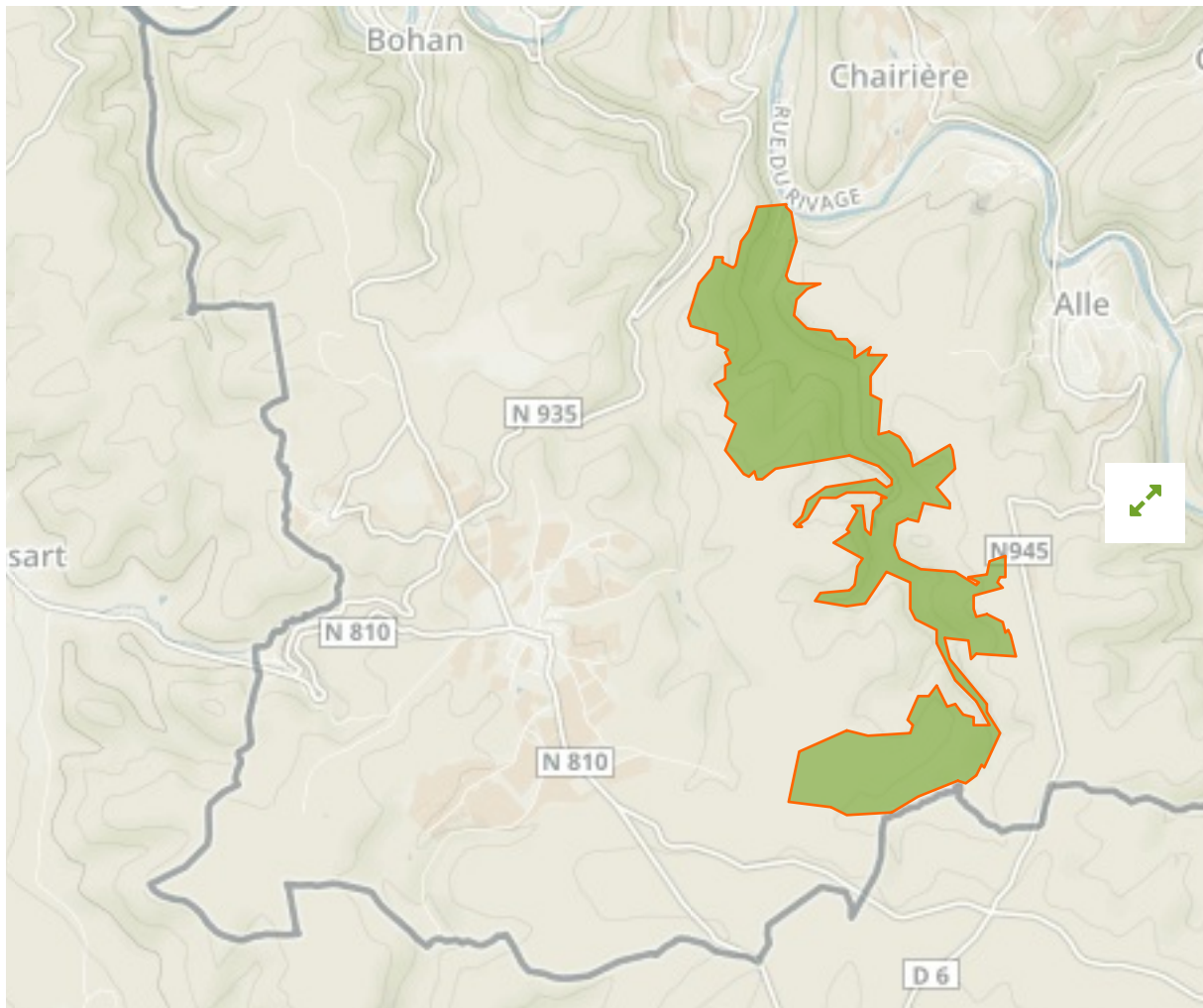


Vallée du Ruisseau de Rebais in Belgium



The designations employed and the presentation of material on this map do not imply the expression of any opinion whatsoever on the part of the Secretariat of the United Nations concerning the legal status of any country, territory, city or area or of its authorities, or concerning the delimitation of its frontiers or boundaries.

WDPA ID

555579896

Reported Area

5.19 km²

Management Effectiveness Evaluations

Natura 2000 National Monitoring 2007

Attributes

Original Name	Vallée du Ruisseau de Rebais (Vresse-sur-Semois)
English Designation	Site of Community Importance (Habitats Directive)
IUCN Management Category	IV
Status	Designated
Type of Designation	Regional
Status Year	2002
Sublocation	
Governance Type	Federal or national ministry or agency
Management Authority	Département de la Nature et des Forêts - DNF
Management Plan	Not Reported
International Criteria	Not Applicable

Site network breakdown

Transboundary sites

Avesnois

in France

Trou aux Feuilles

in Belgium



English Designation
Regional Nature Park

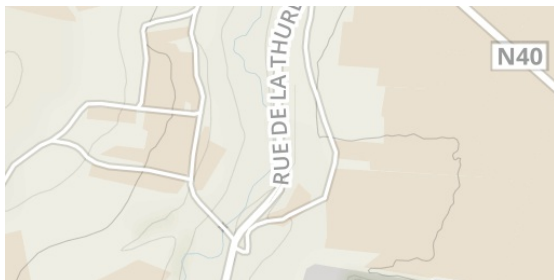
IUCN Category
V

WDPA ID Year of Designation
147523

Reported Area
1182.2 km²

Grotte des Fees

in Belgium



English Designation
State Nature Reserve (Walloon
Region)

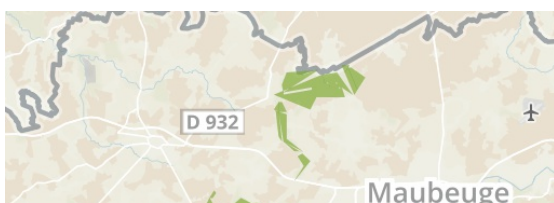
IUCN Category
IV

WDPA ID Year of Designation
386124

Reported Area
0.0 km²

Massif forestier de la Lanière

in France



English Designation
Scientific Interest Site (Walloon
Region)

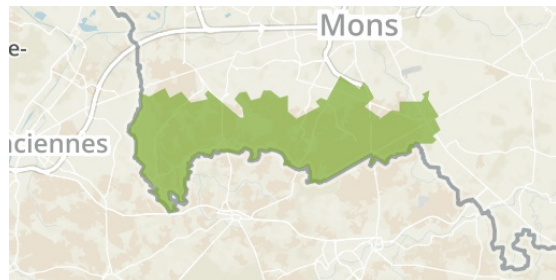
IUCN Category
IV

WDPA ID Year of Designation
333737

Reported Area
0.0 km²

PN des Hauts Pays

in Belgium



English Designation
Nature Park (Walloon Region)

IUCN Category
V

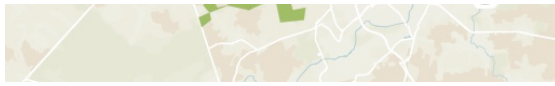
WDPA ID Year of Designation
386139

Reported Area
160.7 km²

Bois d'Encade

in France





English Designation
Biotope Protection Order

IUCN Category
IV

WDPA ID Year of Designation
555514305

Reported Area
8.0 km²



English Designation
Regional Nature Reserve

IUCN Category
IV

WDPA ID Year of Designation
555514386

Reported Area
0.0 km²

[Show all](#)