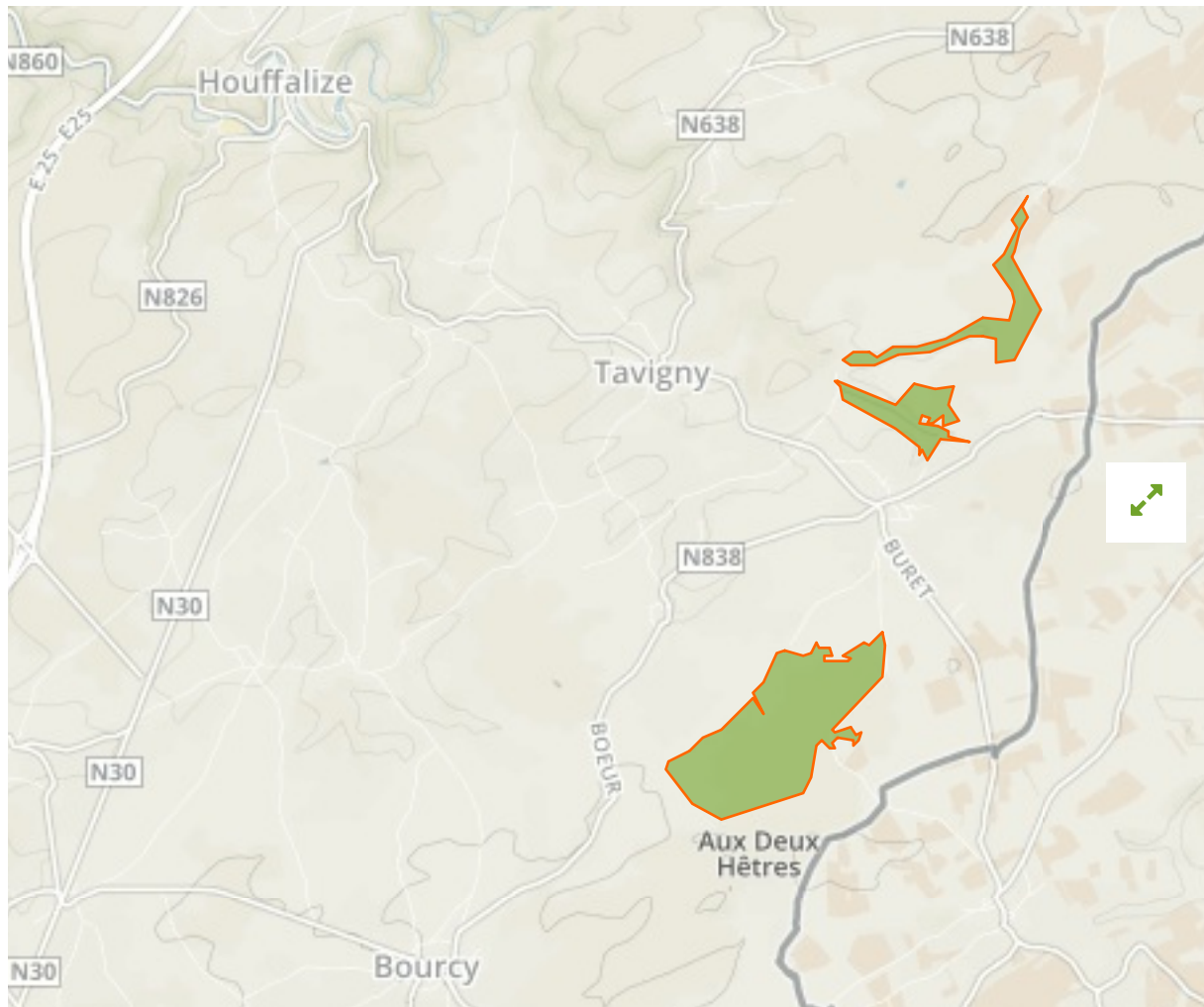


## Sources du Ruisseau de Tavigny in Belgium



The designations employed and the presentation of material on this map do not imply the expression of any opinion whatsoever on the part of the Secretariat of the United Nations concerning the legal status of any country, territory, city or area or of its authorities, or concerning the delimitation of its frontiers or boundaries.

WDPA ID

---

**555623098**

Reported Area

---

**2.41 km<sup>2</sup>**

## Management Effectiveness Evaluations

---

Natura 2000 National Monitoring 2007

### Attributes

---

<b>Original Name</b>	<b>Sources du Ruisseau de Tavigny</b>
<b>English Designation</b>	<b>Special Protection Area (Birds Directive)</b>
<b>IUCN Management Category</b>	<b>IV</b>
Status	Designated
Type of Designation	Regional
Status Year	2014
Sublocation	
Governance Type	Federal or national ministry or agency
Management Authority	Département de la Nature et des Forêts - DNF
Management Plan	Not Reported
International Criteria	Not Applicable

### Site network breakdown

---

#### Transboundary sites

---

**Hannerhaassel**  
in Belgium

**Vallée de la Tretterbaach et affluents de la frontière à Asselborn**  
in Luxembourg



English Designation  
Certified Nature Reserve (Walloon Region)

IUCN Category  
IV

WDPA ID    Year of Designation  
333164

Reported Area  
0.1 km<sup>2</sup>



English Designation  
ZPS - Natura 2000

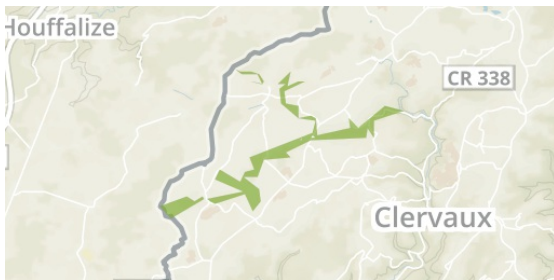
IUCN Category  
IV

WDPA ID    Year of Designation  
337453

Reported Area  
31.5 km<sup>2</sup>

### Vallée de la Tretterbaach

in Luxembourg



English Designation  
ZSC - Natura 2000

IUCN Category  
IV

WDPA ID    Year of Designation  
337477

Reported Area  
4.7 km<sup>2</sup>

### PN des Deux Ourthes

in Belgium



English Designation  
Nature Park (Walloon Region)

IUCN Category  
V

WDPA ID    Year of Designation  
386070

Reported Area  
760.4 km<sup>2</sup>

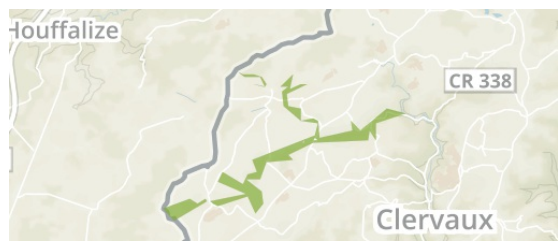
### PN de la Haute-Sure et de la Forêt d'Anlier

in Belgium



### Vallée de la Tretterbaach

in Luxembourg





**English Designation**  
Nature Park (Walloon Region)

**IUCN Category**  
V

**WDPA ID**      **Year of Designation**  
386106

**Reported Area**  
805.4 km<sup>2</sup>

**English Designation**  
Site of Community Importance  
(Habitats Directive)

**IUCN Category**  
Not Reported

**WDPA ID**      **Year of Designation**  
555536871

**Reported Area**  
5.4 km<sup>2</sup>

[Show all](#)