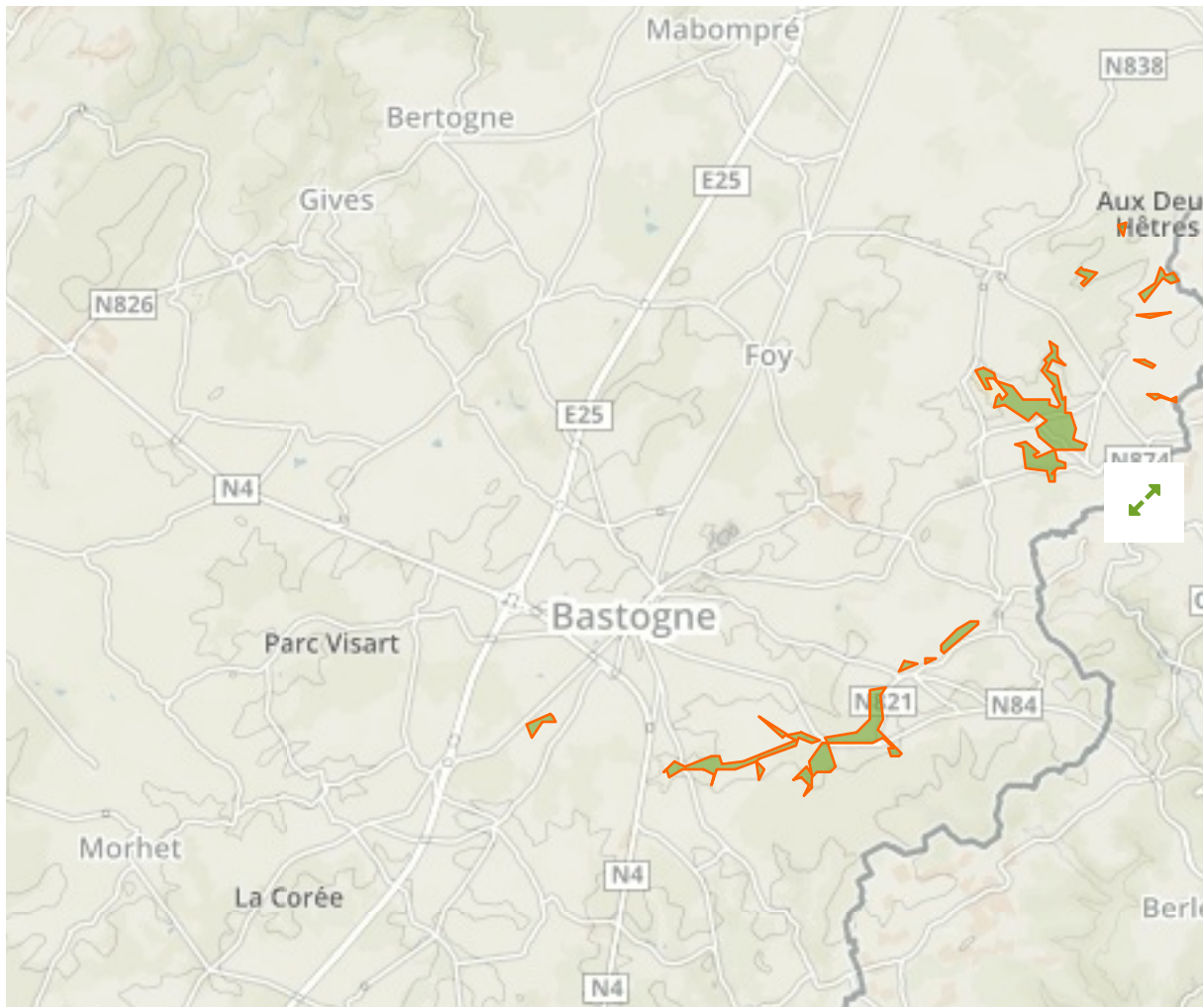


Bassin supérieur de la Wiltz in Belgium



The designations employed and the presentation of material on this map do not imply the expression of any opinion whatsoever on the part of the Secretariat of the United Nations concerning the legal status of any country, territory, city or area or of its authorities, or concerning the delimitation of its frontiers or boundaries.

WDPA ID

555623201

Reported Area

2.81 km²

Management Effectiveness Evaluations

Natura 2000 National Monitoring 2007

Attributes

Original Name	Bassin supérieur de la Wiltz
English Designation	Special Protection Area (Birds Directive)
IUCN Management Category	IV
Status	Designated
Type of Designation	Regional
Status Year	2015
Sublocation	
Governance Type	Federal or national ministry or agency
Management Authority	Département de la Nature et des Forêts - DNF
Management Plan	Not Reported
International Criteria	Not Applicable

Site network breakdown

Transboundary sites

Hannerhaassel

in Belgium

Vallée de la Tretterbaach et affluents de la frontière à Asselborn

in Luxembourg



English Designation
Certified Nature Reserve (Walloon Region)

IUCN Category
IV

WDPA ID Year of Designation
333164

Reported Area
0.1 km²



English Designation
ZPS - Natura 2000

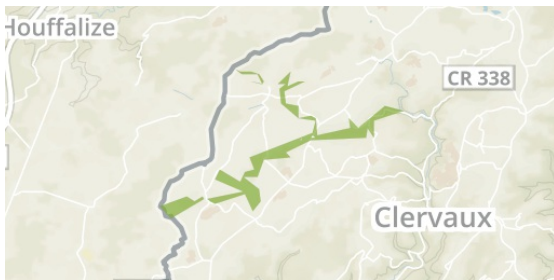
IUCN Category
IV

WDPA ID Year of Designation
337453

Reported Area
31.5 km²

Vallée de la Tretterbaach

in Luxembourg



English Designation
ZSC - Natura 2000

IUCN Category
IV

WDPA ID Year of Designation
337477

Reported Area
4.7 km²

PN des Deux Ourthes

in Belgium



English Designation
Nature Park (Walloon Region)

IUCN Category
V

WDPA ID Year of Designation
386070

Reported Area
760.4 km²

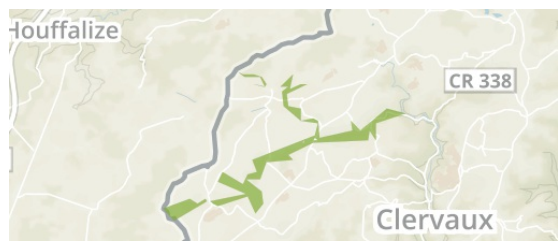
PN de la Haute-Sure et de la Forêt d'Anlier

in Belgium



Vallée de la Tretterbaach

in Luxembourg





English Designation
Nature Park (Walloon Region)

IUCN Category
V

WDPA ID **Year of Designation**
386106

Reported Area
805.4 km²

English Designation
Site of Community Importance
(Habitats Directive)

IUCN Category
Not Reported

WDPA ID **Year of Designation**
555536871

Reported Area
5.4 km²

[Show all](#)