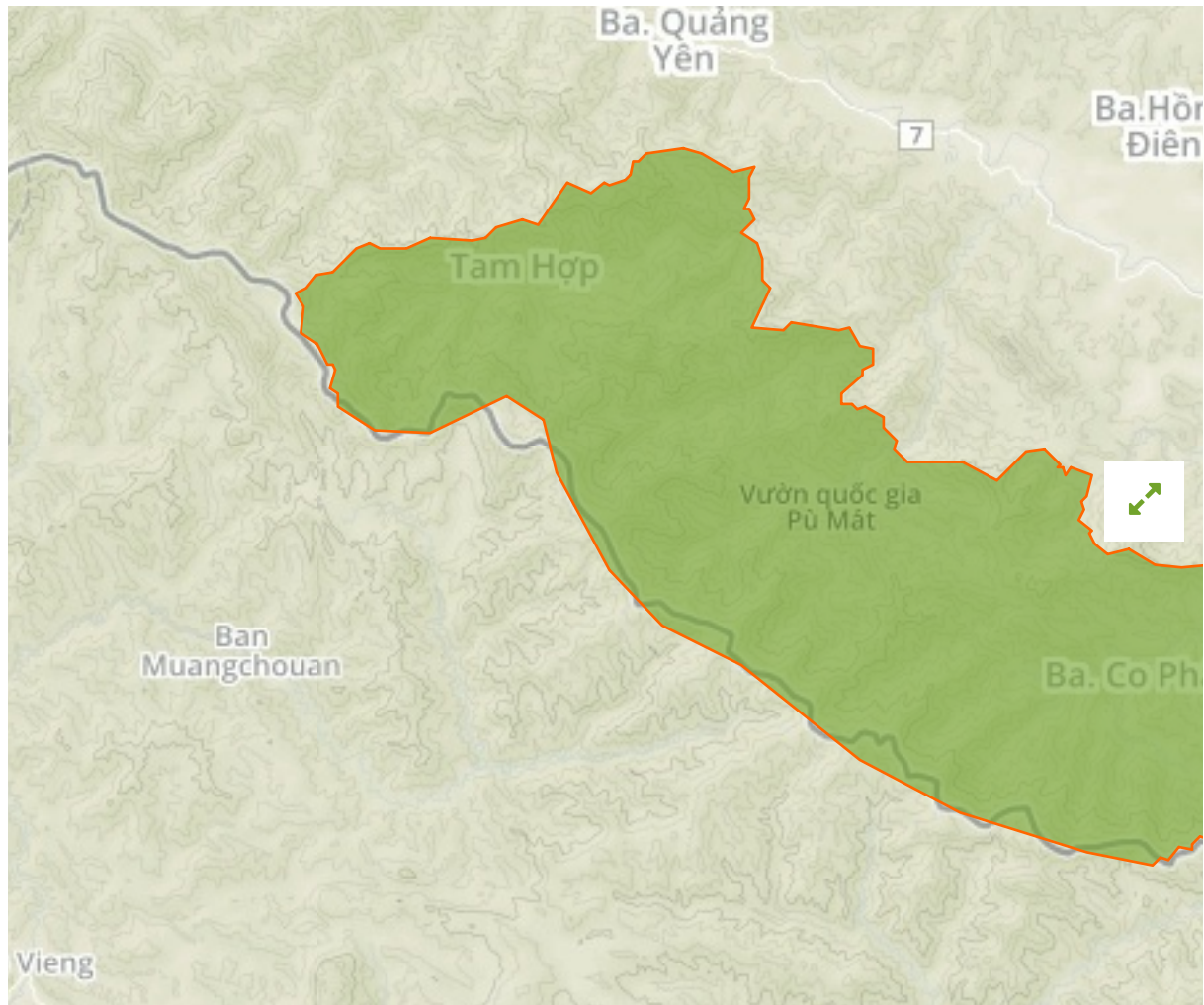


## Pu Mat in Viet Nam



The designations employed and the presentation of material on this map do not imply the expression of any opinion whatsoever on the part of the Secretariat of the United Nations concerning the legal status of any country, territory, city or area or of its authorities, or concerning the delimitation of its frontiers or boundaries.

WDPA ID

---

**61595**

Reported Area

---

**935.24 km<sup>2</sup>**

Green List

---



[View Green List page](#)

### Data Provider

Department of Nature Conservation Vietnam Administration of Forestry

## Management Effectiveness Evaluations

---

METT	2005
RAPPAM	2004

## Attributes

---

<b>Original Name</b>	<b>Pù Mát</b>
<b>English Designation</b>	<b>National Park</b>
<b>IUCN Management Category</b>	<b>II</b>
Status	Designated
Type of Designation	National
Status Year	2001
Sublocation	VN-22
Governance Type	Government-delegated management
Management Authority	People's Committee of Nghe An
Management Plan	Not Reported
International Criteria	Not Applicable

## Site network breakdown

---

## Transboundary sites

---

### Nam Chuane

in Lao People's Democratic Republic



English Designation  
Conservation Area

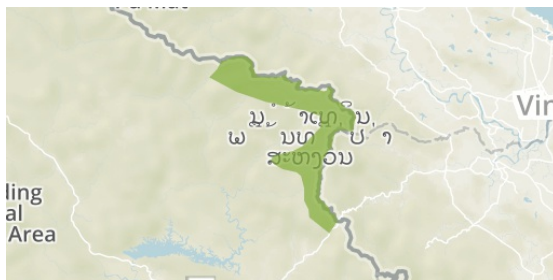
IUCN Category  
Not Reported

WDPA ID      Year of Designation  
12179

Reported Area  
2077.0 km<sup>2</sup>

### Nam Theun Ext.

in Lao People's Democratic Republic



English Designation  
National Biodiversity Conservation Area

IUCN Category  
VI

WDPA ID      Year of Designation  
71255

Reported Area  
645.0 km<sup>2</sup>

### Western Nghe An

in Viet Nam



English Designation  
UNESCO-MAB Biosphere Reserve

IUCN Category  
Not Applicable

WDPA ID      Year of Designation  
478289

Reported Area  
13032.9 km<sup>2</sup>