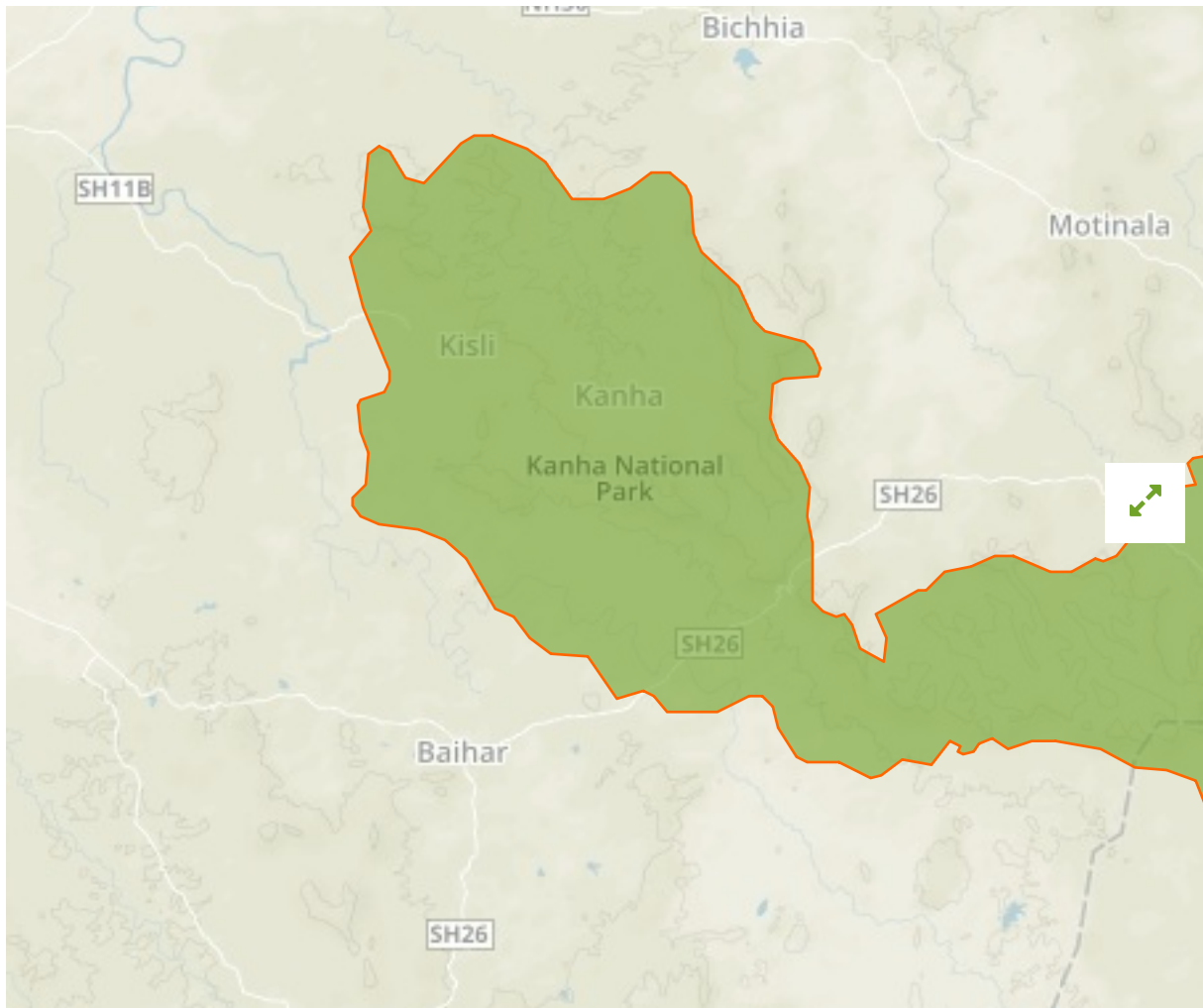


## Kanha in India



The designations employed and the presentation of material on this map do not imply the expression of any opinion whatsoever on the part of the Secretariat of the United Nations concerning the legal status of any country, territory, city or area or of its authorities, or concerning the delimitation of its frontiers or boundaries.

WDPA ID

---

**686**

Reported Area

---

**940.0 km<sup>2</sup>**

## Management Effectiveness Evaluations

---

First Cycle of MEE Tiger Reserve	2006
Second Cycle of MEE Tiger Reserve	2010
Third Cycle of MEE Tiger Reserve	2014

## Attributes

---

<b>Original Name</b>	<b>Kanha</b>
<b>English Designation</b>	<b>National Park</b>
<b>IUCN Management Category</b>	<b>II</b>
Status	Designated
Type of Designation	National
Status Year	1978
Sublocation	IN-MP
Governance Type	Sub-national ministry or agency
Management Authority	Chief Wildlife Warden, State Forest Department
Management Plan	Not Reported
International Criteria	Not Applicable