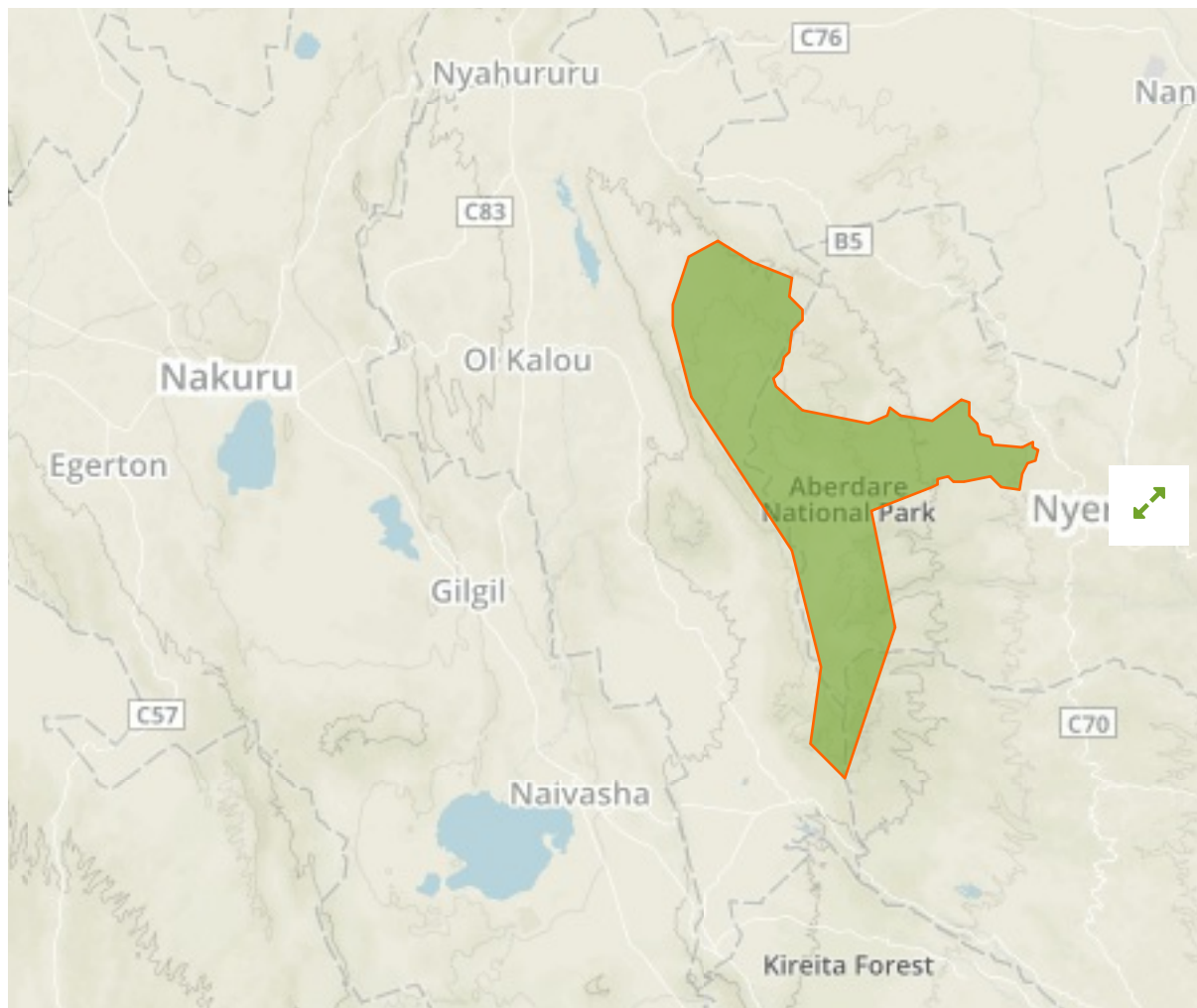


Aberdare in Kenya



The designations employed and the presentation of material on this map do not imply the expression of any opinion whatsoever on the part of the Secretariat of the United Nations concerning the legal status of any country, territory, city or area or of its authorities, or concerning the delimitation of its frontiers or boundaries.

WDPA ID

756

Reported Area

765.7 km²

Data Provider

Kenya Wildlife Service (KWS)

Management Effectiveness Evaluations

No information available

Attributes

Original Name	Aberdare
English Designation	National Park
IUCN Management Category	II
Status	Designated
Type of Designation	National
Status Year	1950
Sublocation	
Governance Type	Federal or national ministry or agency
Management Authority	Kenya Wildlife Service
Management Plan	Not Reported
International Criteria	Not Applicable